

Florida Department of Business & Professional Regulation



Division of Pari-Mutuel Wagering
80th Annual Report
Fiscal Year 2010-2011

Rick Scott
Governor



Ken Lawson
Secretary



Leon M. Biegalski
Director



1940 North Monroe Street
Tallahassee, Florida 32399

Ph: 850.488.9130

www.MyFlorida.com/dbpr



**DEPARTMENT OF BUSINESS AND PROFESSIONAL REGULATION
 DIVISION OF PARI-MUTUEL WAGERING
 COMPREHENSIVE ANNUAL REPORT
 FISCAL YEAR ENDING JUNE 30, 2011
 www.MyFlorida.com/dbpr**

INTRODUCTORY SECTION

Overview and Explanation of Report Terminology	2
Division Overview.....	3
Events Shaping the 2010/2011 Racing/Gaming Season in Florida	6

STATISTICAL SECTION

Pari-Mutuel Statistical Data

Fiscal Years Comparative Data	7
Graphs - Historical Pari-Mutuel Wagering Activity.....	8
Components of Pari-Mutuel Handle From Performances	11
Total State Revenue From Performances	12
Total Regular and Charity/Scholarship Handle.....	13
Total Intertrack Wagering Handle by Guest.....	14
Charity and Scholarship Performances, Racing Scholarship Trust Fund, and Abandoned Winning Tickets.....	17

Cardroom Statistical Data

Cardroom Comparative Data.....	18
Components of Cardroom Revenue by Association.....	19

Slot Statistical Data

Slot Comparative Data.....	20
Revenue per Machine Compared to Average Number of Machines by Month.....	21

DATA BY ASSOCIATION/FACILITY

Pari-Mutuel Facilities Map by Permit Type.....	23
Contact and Operating Information by Association/Facility.....	24
Promotional Programs for Florida-Bred Horses.....	33
Drug Positives Statistical Data.....	34

FINANCIAL STATEMENTS

Summary of State Revenue from Cardroom, Pari-Mutuel, and Slot Activities.....	35
Balance Sheet - Special Revenue Fund.....	36
Statement of Revenue, Expenditures & Changes in Fund Balance - Budget & Actual – Special Revenue Fund.....	37

CARDROOM, PARI-MUTUEL, AND SLOT STATUTE MATRIX

Summary of Cardroom and Pari-Mutuel Handle Distribution	38
Summary of Slot Distribution.....	41

INTRODUCTION

OVERVIEW

This annual report encompasses the fiscal year, which began July 1, 2010, and ended June 30, 2011. This is the 80th annual report in the series. The first annual report was issued for Fiscal Year 1931/1932, the initial year of legalized pari-mutuel wagering. In Florida, pari-mutuel wagering is authorized for horse racing, harness horse racing, quarter horse racing, greyhound racing, jai alai games. Additionally, cardroom poker games are authorized at pari-mutuel facilities; along with slot machine gaming at pari-mutuel facilities in Broward and Miami-Dade Counties. Florida is one of the primary pari-mutuel states in the nation, and is the leading state in greyhound racing, as well as a major horse racing state. Florida is also the only state in the United States where live jai alai games are conducted. As of June 30, 2011, there were 27 pari-mutuel facilities located throughout the state. This annual report, which is required by Florida law, is intended to inform the Governor, the Legislature, the industry and other interested parties of wagering activities at authorized pari-mutuel facilities. The report is organized into five primary sections:

1. **Introductory Section** - An overview of the Division of Pari-Mutuel Wagering, and a report of events that occurred impacting the division's oversight of facilities or events that effected the operation of facilities.
2. **Statistical Section** – Details various cardroom, pari-mutuel and slot statistical data by individual racing association or fronton.
3. **Data by Association/Facility** – Includes map showing location of each association/facility, contact and operating information by association/facility, promotional programs for Florida-bred horses and drug positives statistical data.
4. **Financial Section** - Official financial statements of the Division of Pari-Mutuel Wagering.
5. **Statute Matrix** - A table that summarizes the statutes regarding the taxes and fees applicable to pari-mutuel wagering and cardroom activity. It also includes a summary of the statutes regarding the taxes, fees, fines and penalties with respect to slot machine gaming.

EXPLANATION OF REPORT TERMINOLOGY

Florida law requires intertrack wagers to be combined with the wagering pools of the host or the broadcasting Florida track or fronton. The law also requires that the host take-out on intertrack wagers be the same as for on-track wagers; however, the distribution of the take-out may be different. The tax structure for on-track and intertrack wagering is explained in more detail in the statute matrix section.

Pursuant to Section 550.002(13), Florida Statutes, "handle" is defined as the aggregate contributions to pari-mutuel pools. For purposes of this report, the four types of handle detailed in this report are as follows:

- Live Ontrack: Handle from live races/games at the track/fronton.
- Simulcast: Handle from races/games originating from out-of-state and broadcast to a Florida track/fronton.
- Intertrack: Handle from where a Florida track/fronton (acting as host) broadcast live races/games to other Florida tracks/frontons.
- Intertrack Simulcast: Handle from simulcast signals received by a Florida track/fronton and broadcast to other Florida tracks/frontons.

All intertrack and intertrack simulcast handle is detailed by the host permitholder in this report. These schedules reflect combined wagering statistics for all guest facilities which received broadcasts and conducted wagering and included in the wagering pools of the host. For host permitholders, a summary of intertrack handle components for each guest is shown in the statistical section of this report. The schedules of intertrack wagering handle by guest include data on wagers from intertrack handle and intertrack simulcast handle. Any paid attendance, admission tax, purses paid or players' awards paid are detailed in the data by association/facility section of the report.

THE DIVISION OF PARI-MUTUEL WAGERING

The Division of Pari-Mutuel Wagering is a program area of the Department of Business and Professional Regulation within the Executive Branch of Florida's government. The division is charged with regulating Florida's pari-mutuel, cardroom, and slot machine gaming industries, as authorized by Chapters 550, 551, and Section 849.086, Florida Statutes, as well as collecting and safeguarding associated revenues due to the state. Authorized pari-mutuel events include horse racing, harness racing, quarter horse racing, greyhound racing and jai alai games. Pari-Mutuel Wagering was originally authorized by the Legislature in 1931. Since that time, the division has evolved from a racing commission into a professional regulatory organization overseeing a complex and dynamic industry located throughout the state.

OFFICE OF THE DIRECTOR

The Office of the Director provides leadership, oversight and administration of the six functional areas within the division. Specific responsibilities include budget planning, rule promulgation, policy development, legislative analysis of proposed legislation, strategic planning, fleet management, staff development and enforcement of administrative actions. Additionally, the Office of the Director ensures that all areas of the division operate in a cooperative effort to ensure efficient regulatory oversight of the industry.

The division's structure includes six functional areas which act under the management of the Office of the Director. These functional areas include Revenue and Financial Analysis, Auditing, Operations, Investigations, Slot Operations and Compact Compliance Office. Each area focuses on a different aspect of regulation within the cardroom, pari-mutuel and slot machine gaming industry in an effort to protect state revenues and maintain the public's confidence in the integrity of the wagering activity.

OFFICE OF AUDITING

The auditing staff is responsible for conducting various audits to ensure the integrity of wagering activity and protect the wagering public by ensuring that cardroom, pari-mutuel and slot machine wagering is conducted in compliance with the Florida Statutes and Florida Administrative Code. Such compliance issues include: pari-mutuel broadcast exchanges, verification that takeout/commissions are consistent with notification requirements, interstate wagering restrictions, identification of fraudulent activity, verification that statutory accounting procedures are utilized, overseeing the commingling of wagering pools, transmission of pari-mutuel information, proper payments to winning pari-mutuel patrons, processing certain complaints and approving totalisator security plans and software upgrades. Additionally, the auditing staff maintains primary oversight for cardroom operations, which includes auditing internal control procedures, reviewing tournament or promotional proposals, auditing jackpot accounts, monitoring daily operations and coordinating inspections.

During Fiscal Year 2010/2011, the auditing staff conducted: reviews for 63,544 races/games and associated wagering pools, 18 greyhound purse audits, 21 greyhound adoption proceeds audits, 26 mutuels audits, 27 escheat audits, 24 cardroom audits, 24 surveillance tape audits, 24 jackpot audits, five slot audits, five player's club audits, four horse track breeder's cardroom gross receipts payout audits, eight jai alai player's cardroom gross receipts prize payout audits, two breeders' awards audits and 37 totalisator system malfunction reports.

OFFICE OF OPERATIONS

All individuals and businesses who work or conduct business at a racetrack, fronton, cardroom or slot machine facility and who have access to money wagered, restricted areas and/or racing animals, must obtain an occupational license issued by the division. Every racing and cardroom occupational licensee is fingerprinted upon initial licensure and every five years thereafter; and every slot machine occupational licensee is fingerprinted upon initial licensure and every three years thereafter. Each set of fingerprints are submitted electronically to the Florida Department of Law Enforcement and Federal Bureau of Investigation for processing. During Fiscal Year 2010/2011, Operations' Licensing Section processed 28,980 occupational license applications for businesses and individuals, of which 4,001 were related to cardroom operations, 22,290 were related to racing operations and 2,689 were related to slot machine operations. The Office of Operations also processes applications for the issuance of all pari-mutuel permitholder Annual Operating Dates Licenses, Cardroom Operator Licenses and Slot Machine Licenses to authorized facilities.

The Office of Operations is also responsible for ensuring that the day-to-day operation of races and games are conducted in accordance with Florida's pari-mutuel statutes and rules. The State Stewards monitor each race/game and conduct inquiries and hearings for alleged violations of the state pari-mutuel statutes and rules. The Stewards and Hearing Officers issued 166 rulings, 138 consent orders, and assessed fines totaling \$33,995 and imposed 71 race-riding and/or license suspensions for violations in Fiscal Year 2010/2011.

Operations' staff collects urine and blood samples from racing animals which are sent to the University of Florida's College of Veterinary Medicine Racing Laboratory for analysis. The Racing Laboratory performs its services under an annual contract with the division. State veterinarians and veterinary assistants collected 87,458 samples that included: 71,310 greyhound urine samples and 16,148 horse urine and blood samples. Additionally, division investigators submitted nine investigative samples during Fiscal Year 2010/2011. There were 184 positive findings of impermissible substances in the samples collected.

OFFICE OF INVESTIGATIONS

The Office of Investigations examines statutory and rule violations that occur in the cardroom, pari-mutuel and slot machine gaming industry, as well as drug positives identified by the University of Florida College of Veterinary Medicine Racing Laboratory. The investigations vary in complexity from investigating falsified license applications and animal cruelty, to the use of performance altering medications and/or illegal substances during races. An investigative case may result in issuance of a warning letter, consent order, administrative fine, license suspension, hearings before the division director or a designated hearing officer or referrals to either regulatory or law enforcement agencies for criminal prosecution. During Fiscal Year 2010/2011, there were 965 investigations conducted, including 27 drug positives, 43 slot related cases and the preparation of 84 consent orders and warning letters.

The investigations' staff also conducts background examinations of potential permitholders which involves an in-depth review of the applicants' personal and financial records in order to ensure compliance with Sections 550.054, 550.1815, and 849.086, Florida Statutes. In addition, the investigations' staff conducted 4,652 in-depth inspections of pari-mutuel facilities and slot machine facilities, including cardrooms, greyhound kennels and horse stables; both prior to opening of a meet, as well as throughout the operating year.

OFFICE OF SLOT OPERATIONS

The Slot Operations' staff is responsible for overseeing state personnel located at each of the pari-mutuel facilities in Broward and Miami-Dade County that have slot machine gaming. To ensure the integrity of slot machine gaming activity, the Slot Operations' staff oversees the day-to-day operations at the slot machine facilities, performs daily revenue reconciliations, verifies that every slot machine has been certified by an independent testing laboratory, issues slot machine occupational licenses to individuals and ensures slot machine gaming activity is in compliance with the requirements of Chapter 551, Florida Statutes, Chapter 1D-14, Florida Administrative Code, as well as the internal controls of the individual facilities.

During Fiscal Year 2010/2011, the Slot Operations' staff completed 4,430 inspections. Of those, 209 items were found to be non-compliance of which 10 were turned over to Investigations and to the department's Office of the General Counsel for formal proceedings. Slot machine facilities were notified of 208 observations from inspections so that appropriate internal action including employee disciplinary action, advanced training and/or re-training of facility personnel could occur. There were 125 individual and facility Consent Orders issued at the regional level totaling \$8,425 in fines or final warning notices.

There were 475 shipments of authorized slot machines and components, which required the verification of 1,620 slot machines and 14,621 parts. The Slot Operations' staff authorized and participated in 7,597 slot machine conversions, denomination and/or game theme changes, slot machine relocations and other related slot machine changes.

OFFICE OF REVENUE AND FINANCIAL ANALYSIS

The Revenue and Financial Analysis staff is responsible for safeguarding and accounting for state revenues in accordance with Florida Statutes and Florida Administrative Code, as it relates to cardroom, pari-mutuel and slot gaming activities. The staff develops revenue projections for the Revenue Estimating Conferences, maintains cash flow statements for timely transfer to the state General Revenue Fund and to the Education Enhancement Trust Fund, provides oversight of the division's budget, develops the annual report and determines fiscal impacts on proposed legislation impacting the industry.

During Fiscal Year 2010/2011, \$173,948,625 in state revenues pertaining to cardroom, pari-mutuel and slot machine gaming were collected. The Revenue and Financial Analysis staff also reconciled 668 permitholder monthly remittance reports, conducted 16 charity day audits and 38 uniform annual report audits. The Revenue and Financial Analysis staff compiles statistical information for cardroom, pari-mutuel and slot machine gaming, and performs analyses requested by the department, the Executive Office of the Governor, the Legislature and industry.

STATE COMPLIANCE AGENCY

The Gaming Compact between the Seminole Tribe of Florida and the State of Florida, 75 FR 38833, was executed by the Governor on April 7, 2010, and ratified by the United States Department of the Interior on July 7, 2010. The Division of Pari-Mutuel Wagering was designated by the Florida Legislature as the State Compliance Agency (SCA) with the authority to carry out the State's oversight responsibilities in accordance with the provisions outlined in the Compact. The Seminole Tribe of Florida operates seven (7) casinos located in Broward, Hillsborough, Collier, Glades and Hendry counties, and is the largest operator of gaming facilities in the State.

During Fiscal Year 2010/2011, the State Compliance Agency completed 55 inspections of tribal gaming facilities spanning over 416 man hours. Additionally, \$137,500,000 in revenue sharing with the Tribe was collected. Of this, \$750,000 was distributed to local governments, including both counties and municipalities, which were affected by the Tribe's operation of covered gaming activities.

The Miccosukee Tribe was not made a part of this Compact, and therefore, continues to operate exclusively within Federal jurisdiction. For additional information, contact the National Indian Gaming Commission, www.nigc.gov, or at the United States Department of Interior, 1441 L Street N.W., Suite 9100, Washington, D.C. 20005-3584, Telephone 202.632.7003.

Events Shaping the 2010/2011 Racing/Gaming Season in Florida

- The List of Authorized Card Games was first posted for viewing in July 2010, via the department website.
- On August 19, 2010, the division signed a final order for Investment Corporation of Palm Beach to convert their inactive jai alai permit to a greyhound permit. On October 1, 2010, they operated as License Acquisitions, LLC at Palm Beach Kennel Club until December 31, 2010, becoming a dual permit site.
- Daytona Beach Kennel Club converted the inactive Volusia Jai Alai permit to a greyhound permit and began West Volusia Racing, Inc., on January 1, 2011, through April 2, 2011, creating another dual permit facility.
- January 2011 marked the first time the division approved the use of “hole card” cameras in Florida for Orange Park Kennel Club. The event was broadcast through several television networks, increasing public awareness of Florida cardroom gaming.
- Calder Race Course, Gulfstream Park and Orlando Jai Alai all introduced new or experimental wagers this year. Several have been successful. In cooperation with the permitholders striving to entice more patrons, Rule 61D-7.014, F.A.C, was amended allowing higher jackpot balances and payouts.
- The *Gaming Compact between the Seminole Tribe of Florida and the State of Florida*, 75 FR 38833, was executed by the Governor on April 7, 2010, and ratified by the United States Department of the Interior on July 7, 2010. State collection of revenue sharing pursuant to the Compact began in August 2010. State oversight of Seminole gaming facilities, as outlined in the Compact, began the same month.
- Hialeah obtained a license to operate slots on December 22, 2010.
- Miami Jai Alai obtained a license to operate slots on May 12, 2011.
- Effective July 1, 2010, the annual license fee for slot gaming was reduced from \$3 million to \$2.5 million.

STATISTICAL SECTION

FISCAL YEARS COMPARATIVE DATA

Beginning with the 1931/1932 Fiscal Year, the state began collecting taxes on pari-mutuel wagering. In most recent years, pari-mutuel handle has steadily declined. During that initial year, the pari-mutuel industry operated 462 racing days in Florida, which resulted in state revenue of \$737,301; total paid attendance of 1,157,161; and total pari-mutuel handle of \$17,365,424.

Since Fiscal Year 1931/1932, approximately \$71.4 billion in pari-mutuel handle wagered resulted in \$4.33 billion in state revenue. There were 3,633 cumulative operating days held this fiscal year, which resulted in approximately \$883.3 million in total handle, and \$13.6 million in state revenue.

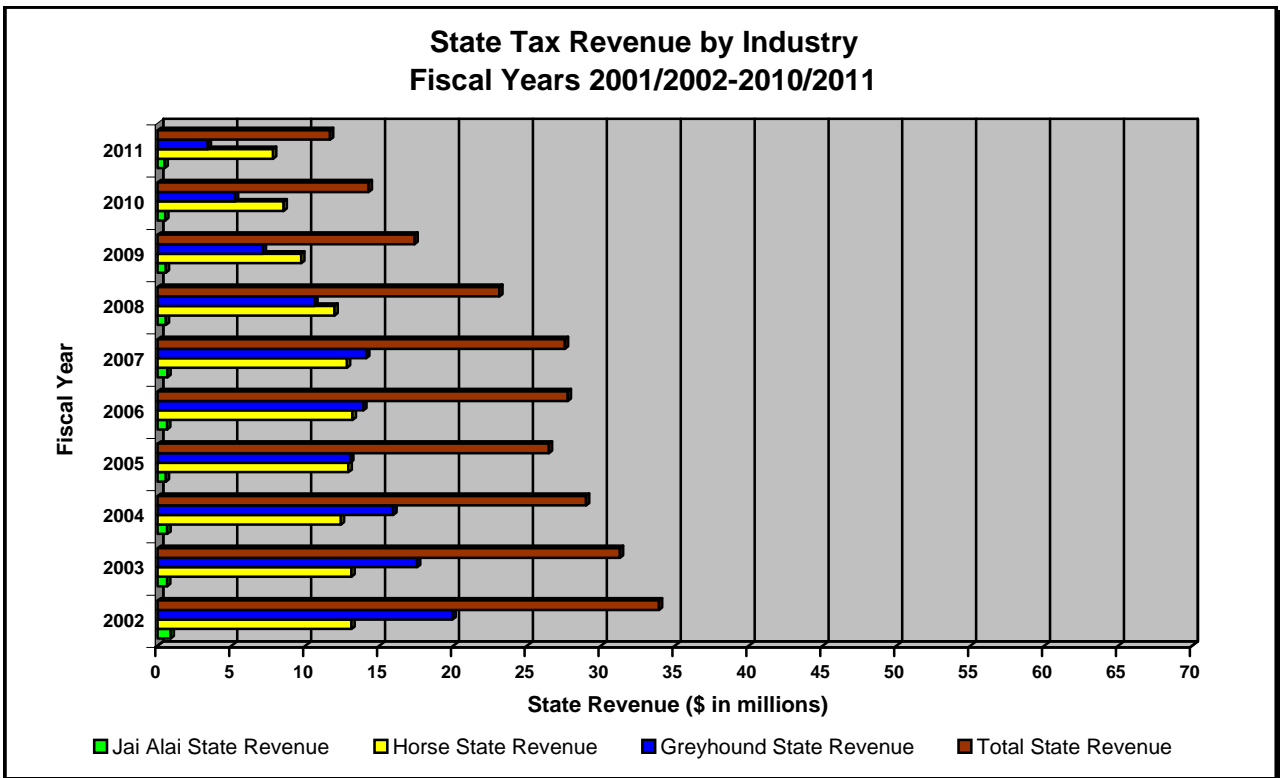
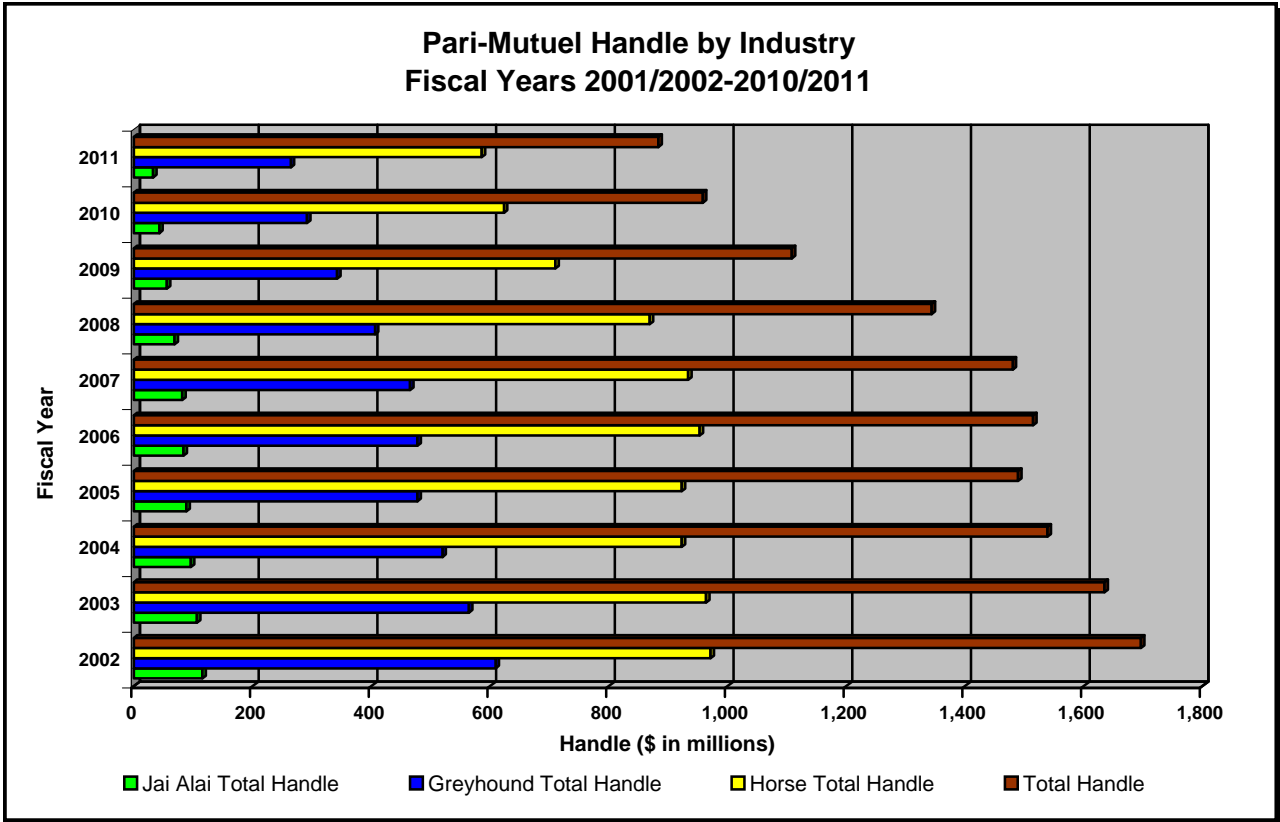
Over the last ten years, pari-mutuel wagering has experienced a 48 percent decline in handle, and total state revenue has decreased 63.4 percent; along with a 21.3 percent decrease in the number of racing days. Shown below is a summary of pari-mutuel handle and state revenue for Fiscal Years 2001/2002 through 2010/2011.

PARI-MUTUEL HANDLE AND STATE REVENUE SUMMARY

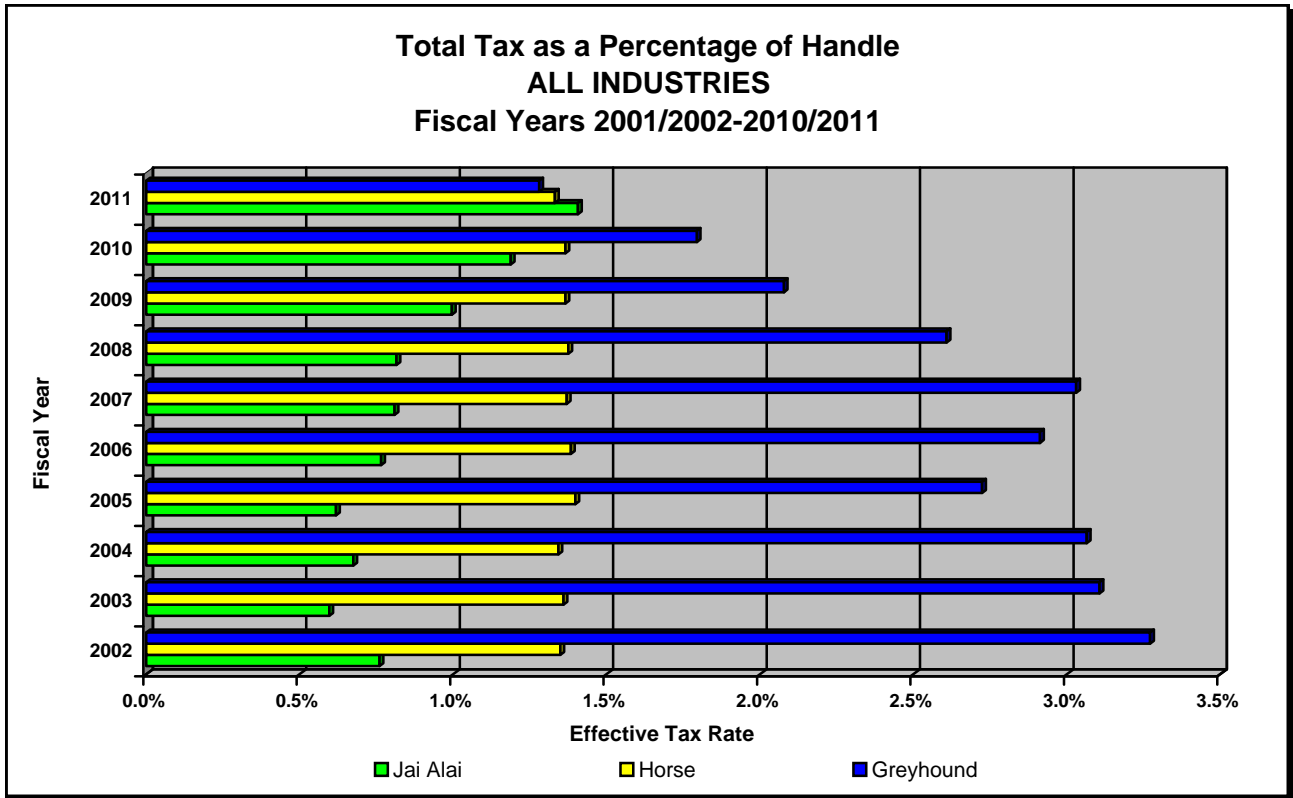
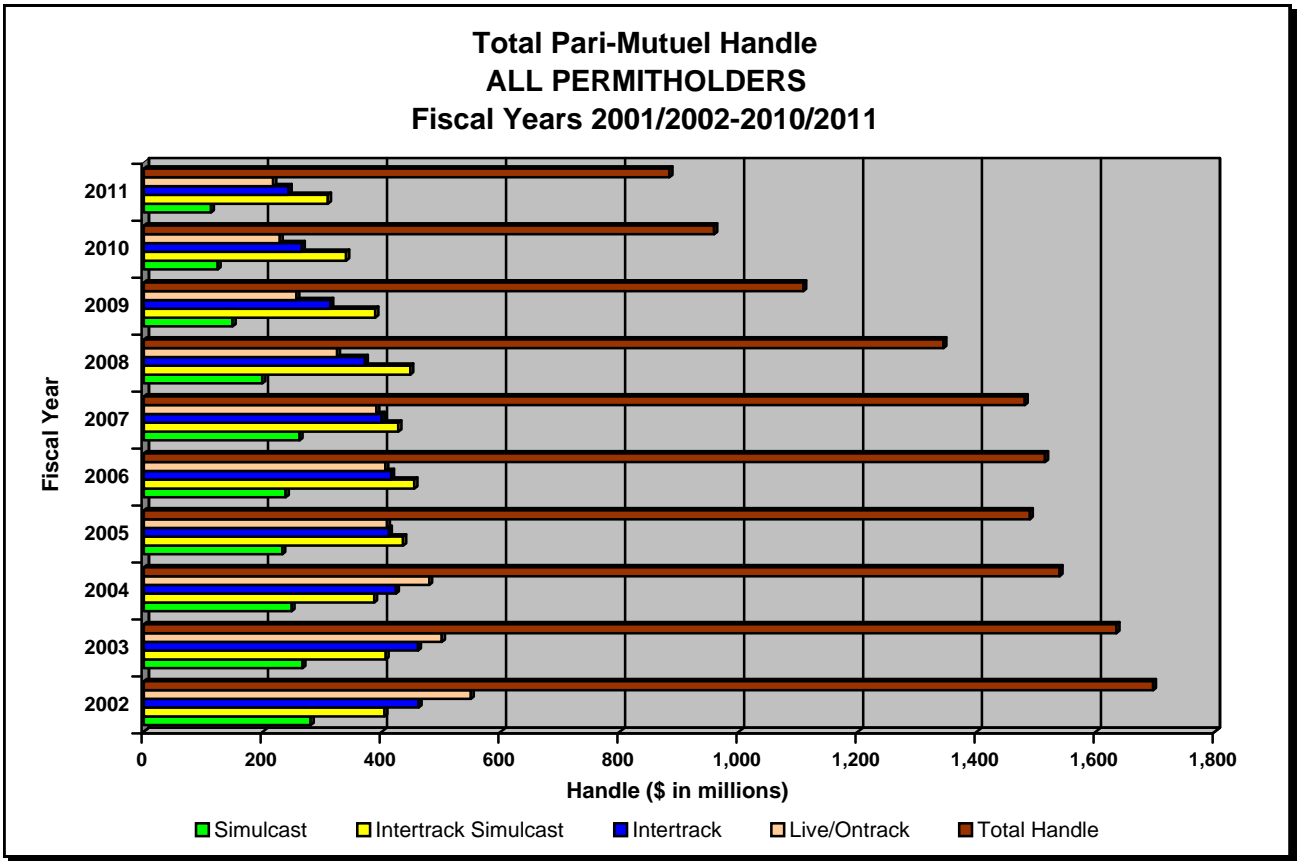
<i>Fiscal Year</i>	<i>Number of Racing Days</i>	<i>Total Paid Attendance</i>	<i>Total Pari-Mutuel Handle</i>	<i>Total State Revenue ⁽¹⁾</i>	<i>State Revenue as a Percent of Handle</i>
2001/2002	4,614	2,836,869	\$1,696,360,808	\$37,114,026	2.19%
2002/2003	4,365	2,742,429	\$1,634,786,514	\$34,335,380	2.10%
2003/2004	4,459	2,804,583	\$1,539,122,995	\$34,218,813	2.22%
2004/2005	4,424	2,135,044	\$1,489,330,477	\$33,199,857	2.23%
2005/2006	4,993	2,066,192	\$1,514,758,761	\$35,178,969	2.32%
2006/2007	5,592	2,351,126	\$1,480,427,370	\$30,214,151	2.04%
2007/2008	4,857	1,419,748	\$1,343,912,504	\$25,657,727	1.91%
2008/2009	4,364	722,699	\$1,108,401,006	\$19,814,027	1.79%
2009/2010	4,167	614,889	\$ 958,537,395	\$16,706,611	1.74%
2010/2011	3,633	507,804	\$ 883,381,429	\$13,573,343	1.54%

(1) Beginning 2006/2007, this figure includes state revenue from pari-mutuel performances and other state revenue, and does not include state revenue from cardroom and slot operations.

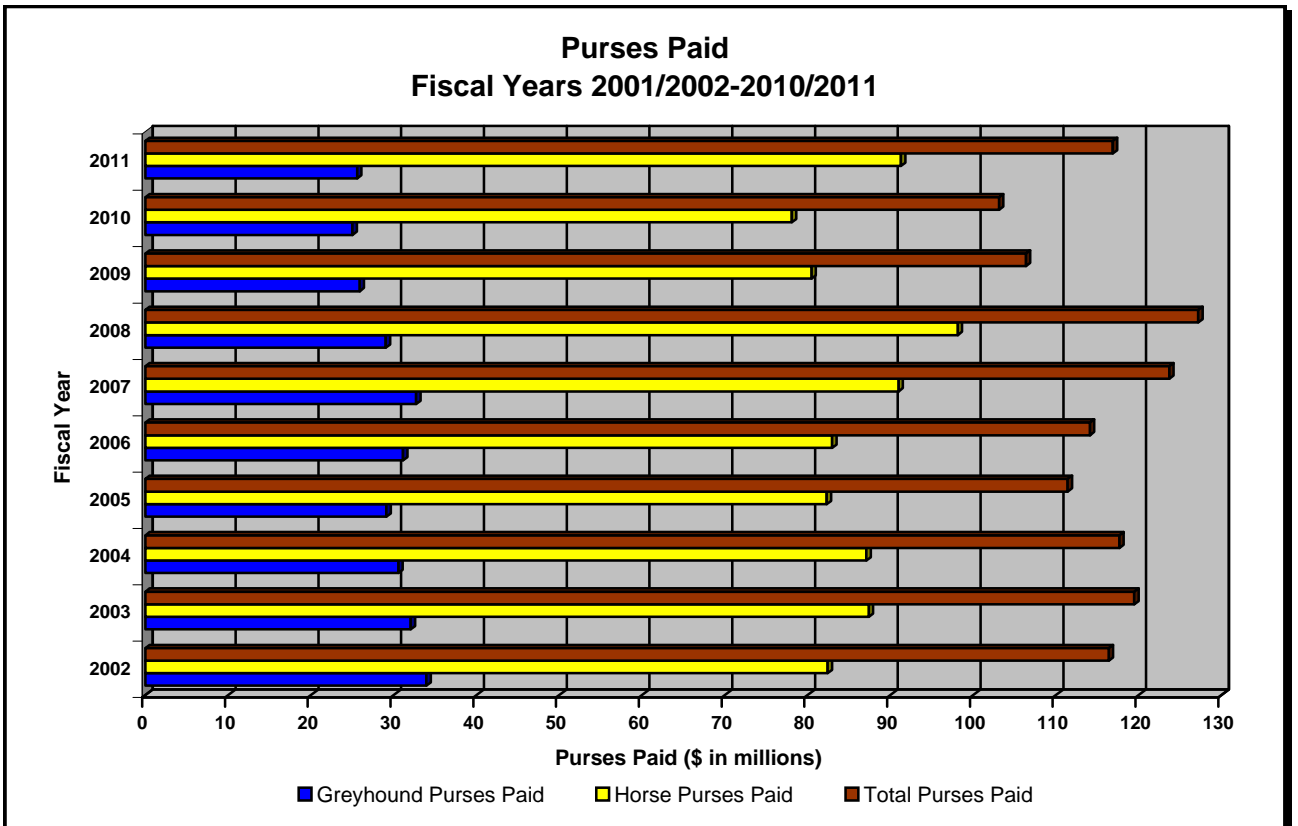
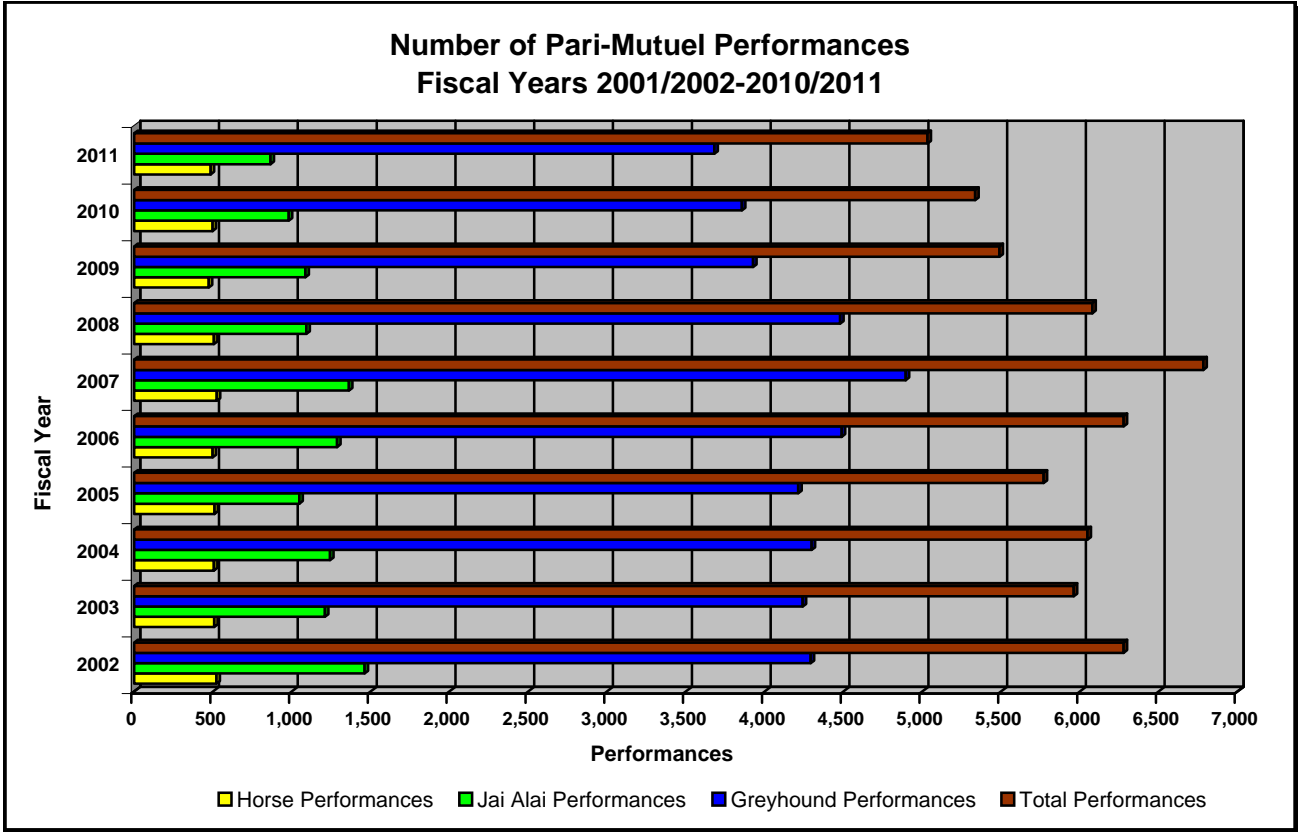
HISTORICAL PARI-MUTUEL WAGERING ACTIVITY



HISTORICAL PARI-MUTUEL WAGERING ACTIVITY



HISTORICAL PARI-MUTUEL WAGERING ACTIVITY



COMPONENTS OF PARI-MUTUEL HANDLE FROM PERFORMANCES

Fiscal Year 2010/2011	Daily License Fee	Tax on Handle	Total Paid To Charities	Permittholder Revenues From Pari-Mutuel Handle	Public Pool	Total Handle
Greyhound Racing Associations						
Daytona Beach Kennel Club, Inc.	\$15,900	\$0	\$31,151	\$2,788,863	\$7,348,382	\$10,184,296
Derby Lane (St. Petersburg Kennel Club, Inc.)	55,200	206,155	158,882	6,221,967	21,217,635	27,859,839
Ebro Greyhound Park	10,122	4,962	3,914	516,257	1,135,638	1,670,893
Flagler Dog Track	123,680	447,077	66,872	3,695,634	14,261,641	18,594,904
H&T Gaming, Inc., d/b/a Mardi Gras Racetrack	8,900	0	31,391	1,651,315	5,728,204	7,419,810
Jacksonville Kennel Club, Inc.	30,560	83,989	110,538	3,274,627	11,276,157	14,775,871
Jefferson County Kennel Club, Inc.	86,160	25,097	4,375	247,000	831,780	1,194,412
License Acquisitions, LLC, d/b/a Palm Beach Greyhound Racing	81,440	349,527	90,689	3,191,425	11,980,465	15,693,546
Mardi Gras Racetrack and Gaming Center	8,900	0	29,756	1,508,984	5,192,033	6,739,673
Melbourne Greyhound Park, LLC	5,549	647	0	39,255	96,279	141,730
Naples-Ft. Myers Greyhound Track	103,120	247,523	59,779	4,637,287	16,812,620	21,860,329
Orange Park Kennel Club, Inc.	34,080	97,955	103,474	2,908,050	10,124,983	13,268,542
Palm Beach Kennel Club	160,480	736,211	107,890	10,665,697	37,678,630	49,348,908
Penn Sanford, LLC, d/b/a Sanford-Orlando Kennel Club	15,360	0	27,963	1,400,132	5,018,978	6,462,433
Pensacola Greyhound Racing, LLP	28,791	14,849	0	396,759	1,292,061	1,732,460
SOKC, LLC, d/b/a Sanford-Orlando Kennel Club	15,360	0	29,538	1,296,097	4,796,555	6,137,550
Sarasota Kennel Club, Inc.	10,320	2,074	37,645	2,275,113	7,158,645	9,483,797
St. Johns Greyhound Park	36,560	114,666	103,155	5,338,568	17,996,968	23,589,917
Tampa Greyhound Track	49,200	151,710	120,688	5,580,005	18,805,458	24,707,061
West Volusia Racing, Inc.	14,240	0	28,193	1,024,644	2,733,569	3,800,646
Total Greyhound Tracks	\$893,922	\$2,482,442	\$1,145,893	\$58,657,679	\$201,486,681	\$264,666,617
Jai Alai Frontons						
Dania Jai Alai	\$105,000	\$0	\$1,185	\$2,113,718	\$6,707,506	\$8,927,409
Ft. Pierce Jai Alai	24,960	60,406	1,441	558,454	1,669,374	2,314,635
Hamilton Jai Alai and Poker	31,360	0	0	(31,169)	494	685
Miami Jai Alai	100,320	0	5,652	2,672,298	7,931,499	10,709,769
Ocala Poker and Jai Alai	13,120	0	0	(4,293)	24,623	33,450
Orlando Jai Alai	22,680	0	2,985	224,191	775,622	1,025,478
Summer Jai Alai	29,760	0	3,835	738,988	2,203,713	2,976,296
Summersport Enterprises, LLC	74,520	0	1,626	1,628,994	5,150,820	6,855,960
Total Jai Alai Frontons	\$401,720	\$60,406	\$16,724	\$7,901,181	\$24,463,651	\$32,843,682
Thoroughbred Racing Associations						
Calder Race Course, Inc.	\$194,300	\$2,852,793	\$303,367	\$42,431,464	\$170,882,868	\$216,664,792
Gulfstream Park Racing Association, Inc.	133,700	1,237,283	130,365	28,516,073	111,111,727	141,129,148
Tampa Bay Downs, Inc.	168,200	1,266,926	107,143	18,493,474	73,653,016	93,688,759
Tropical Park, Inc.	88,200	905,023	273,726	16,309,804	65,886,055	83,462,808
Total Thoroughbred Tracks	\$584,400	\$6,262,025	\$814,601	\$105,750,815	\$421,533,666	\$534,945,507
Harness Racing Associations						
Isle Casino and Racing at Pompano Park	\$329,200	\$563,670	\$9,464	\$10,273,225	\$38,337,964	\$49,513,523
Quarter Horse Racing Associations						
South Florida Racing Association, LLC (Hialeah Park)	\$29,100	\$15,492	\$0	\$146,226	\$1,221,282	\$1,412,100
TOTAL FOR ALL TRACKS AND FRONTONS	\$2,238,342	\$9,384,035	\$1,986,682	\$182,729,126	\$687,043,244	\$883,381,429

TOTAL STATE REVENUE FROM PERFORMANCES

Fiscal Year 2010/2011

	LIVE			SIMULCAST			ITW	ITW SIM	CHARITY PERFORMANCES	TOTAL TAXES and FEES COLLECTED ^(A)
	Tax on Handle	Daily License Fee	Total Live Taxes and Fees Collected	Tax on Handle	Daily License Fee	Total Simulcast Taxes and Fees Collected	Tax on Handle	Tax on Handle	Daily License Fee	
Greyhound Racing Associations										
Daytona Beach Kennel Club, Inc.	\$0	\$0	\$0	\$0	\$0	\$0	\$0	\$0	\$15,900	\$15,900
Derby Lane (St. Petersburg Kennel Club, Inc.)	83,010	40,800	123,810	0	0	0	123,145	0	14,400	261,355
Ebro Greyhound Park	4,962	6,282	11,244	0	0	0	0	0	3,840	15,084
Flagler Dog Track	58,150	61,200	119,350	60,746	49,500	110,246	111,282	216,899	12,980	570,757
H&T Gaming, Inc., d/b/a Mardi Gras Racetrack	0	0	0	0	0	0	0	0	8,900	8,900
Jacksonville Kennel Club, Inc.	35,932	16,160	52,092	0	0	0	48,057	0	14,400	114,549
Jefferson County Kennel Club, Inc.	25,097	80,960	106,057	0	0	0	0	0	5,200	111,257
License Acquisitions, LLC, d/b/a Palm Beach Greyhound Racing	160,629	67,520	228,149	0	0	0	188,898	0	13,920	430,967
Mardi Gras Racetrack and Gaming Center	0	0	0	0	0	0	0	0	8,900	8,900
Melbourne Greyhound Park, LLC	647	5,549	6,196	0	0	0	0	0	0	6,196
Naples-Ft. Myers Greyhound Track	121,344	92,400	213,744	0	0	0	126,179	0	10,720	350,643
Orange Park Kennel Club, Inc.	37,258	19,680	56,938	0	0	0	60,697	0	14,400	132,035
Palm Beach Kennel Club	338,785	146,560	485,345	0	0	0	397,426	0	13,920	896,691
Penn Sanford, LLC, d/b/a Sanford-Orlando Kennel Club	0	0	0	0	0	0	0	0	15,360	15,360
Pensacola Greyhound Racing, LLP	14,849	28,791	43,640	0	0	0	0	0	0	43,640
SOKC, LLC, d/b/a Sanford-Orlando Kennel Club	0	0	0	0	0	0	0	0	15,360	15,360
Sarasota Kennel Club, Inc.	1,606	2,000	3,606	0	0	0	468	0	8,320	12,394
St. Johns Greyhound Park	46,199	22,160	68,359	0	0	0	68,467	0	14,400	151,226
Tampa Greyhound Track	65,281	34,800	100,081	0	0	0	86,429	0	14,400	200,910
West Volusia Racing, Inc.	0	0	0	0	0	0	0	0	14,240	14,240
Total Greyhound Tracks	\$993,749	\$624,862	\$1,618,611	\$60,746	\$49,500	\$110,246	\$1,211,048	\$216,899	\$219,560	\$3,376,364
Jai Alai Frontons										
Dania Jai Alai	\$0	\$104,040	\$104,040	\$0	\$0	\$0	\$0	\$0	\$960	\$105,000
Ft. Pierce Jai Alai	0	24,480	24,480	0	0	0	60,406	0	480	85,366
Hamilton Jai Alai and Poker	0	31,360	31,360	0	0	0	0	0	0	31,360
Miami Jai Alai	0	98,880	98,880	0	0	0	0	0	1,440	100,320
Ocala Poker and Jai Alai	0	13,120	13,120	0	0	0	0	0	0	13,120
Orlando Jai Alai	0	20,160	20,160	0	0	0	0	0	2,520	22,680
Summer Jai Alai	0	28,800	28,800	0	0	0	0	0	960	29,760
Summersport Enterprises, LLC	0	73,560	73,560	0	0	0	0	0	960	74,520
Total Jai Alai Frontons	\$0	\$394,400	\$394,400	\$0	\$0	\$0	\$60,406	\$0	\$7,320	\$462,126
Thoroughbred Racing Associations										
Calder Race Course, Inc.	\$73,724	\$100,100	\$173,824	\$203,785	\$87,500	\$291,285	\$192,114	\$2,383,170	\$6,700	\$3,047,093
Gulfstream Park Racing Association, Inc.	188,858	73,200	262,058	113,494	52,500	165,994	369,649	565,282	8,000	1,370,983
Tampa Bay Downs, Inc.	77,960	88,200	166,160	35,764	71,500	107,264	406,185	747,017	8,500	1,435,126
Tropical Park, Inc.	33,589	44,800	78,389	64,862	35,000	99,862	88,384	718,188	8,400	993,223
Total Thoroughbred Tracks	\$374,131	\$306,300	\$680,431	\$417,905	\$246,500	\$664,405	\$1,056,332	\$4,413,657	\$31,600	\$6,846,425
Harness Racing Associations										
Isle Casino and Racing at Pompano Park	\$22,428	\$141,700	\$164,128	\$68,723	\$179,000	\$247,723	\$53,250	\$419,269	\$8,500	\$892,870
Quarter Horse Racing Associations										
South Florida Racing Association, LLC (Hialeah Park)	\$11,048	\$19,600	\$30,648	\$639	\$9,500	\$10,139	\$2,668	\$1,137	\$0	\$44,592
TOTAL FOR ALL TRACKS AND FRONTONS	\$ 1,401,356	\$1,486,862	\$2,888,218	\$548,013	\$484,500	\$1,032,513	\$2,383,704	\$5,050,962	\$266,980	\$11,622,377

(A) The amounts shown are taxes and fees collected after the application of any applicable tax credits, and do not include admissions tax.

TOTAL REGULAR AND CHARITY/SCHOLARSHIP HANDLE

Fiscal Year 2010/2011

	ON-TRACK		INTERTRACK		TOTAL REGULAR HANDLE	ON-TRACK		INTERTRACK		TOTAL CHARITY SCHOLARSHIP HANDLE	TOTAL HANDLE
	Live	Simulcast	ITW	ITWS		Live	Simulcast	ITW	ITWS		
Greyhound Racing Associations											
Daytona Beach Kennel Club, Inc.	\$4,395,833	\$339,690	\$4,960,087	\$0	\$9,695,610	\$287,296	\$30,856	\$170,534	\$0	\$488,686	\$10,184,296
Derby Lane (St. Petersburg Kennel Club, Inc.)	10,572,855	0	14,851,148	0	25,424,003	1,278,703	0	1,157,133	0	2,435,836	27,859,839
Ebro Greyhound Park	1,619,399	0	0	0	1,619,399	51,494	0	0	0	51,494	1,670,893
Flagler Dog Track	2,724,826	2,172,154	5,074,680	7,521,539	17,493,199	210,703	82,794	440,131	368,077	1,101,705	18,594,904
H&T Gaming, Inc., d/b/a Mardi Gras Racetrack	1,040,416	1,810,759	1,572,186	2,462,272	6,885,633	136,258	92,438	173,441	132,040	534,177	7,419,810
Jacksonville Kennel Club, Inc.	4,698,619	28,046	8,106,149	122,947	12,955,761	729,182	0	1,090,928	0	1,820,110	14,775,871
Jefferson County Kennel Club, Inc.	1,136,843	0	0	0	1,136,843	57,569	0	0	0	57,569	1,194,412
License Acquisitions, LLC, d/b/a Palm Beach Greyhound Racing	5,115,110	0	8,959,529	0	14,074,639	676,493	0	942,414	0	1,618,907	15,693,546
Mardi Gras Racetrack and Gaming Center	1,201,190	1,452,379	1,385,705	2,196,170	6,235,444	126,391	95,935	143,317	138,586	504,229	6,739,673
Melbourne Greyhound Park, LLC	141,730	0	0	0	141,730	0	0	0	0	0	141,730
Naples-Ft. Myers Greyhound Track	8,994,422	0	11,789,245	0	20,783,667	565,768	0	510,894	0	1,076,662	21,860,329
Orange Park Kennel Club, Inc.	4,013,498	0	7,535,430	0	11,548,928	662,489	0	1,057,125	0	1,719,614	13,268,542
Palm Beach Kennel Club	17,584,283	0	29,780,734	0	47,365,017	953,824	0	1,030,067	0	1,983,891	49,348,908
Penn Sanford, LLC, d/b/a Sanford-Orlando Kennel Club	3,498,513	0	2,517,878	0	6,016,391	252,999	0	193,043	0	446,042	6,462,433
Pensacola Greyhound Racing, LLP	1,732,460	0	0	0	1,732,460	0	0	0	0	0	1,732,460
SOKC, LLC, d/b/a Sanford-Orlando Kennel Club	3,543,583	0	2,120,019	0	5,663,602	306,930	0	167,018	0	473,948	6,137,550
Sarasota Kennel Club, Inc.	6,040,786	0	2,876,627	0	8,917,413	449,332	0	117,052	0	566,384	9,483,797
St. Johns Greyhound Park	8,347,045	0	13,455,130	0	21,802,175	758,085	0	1,029,657	0	1,787,742	23,589,917
Tampa Greyhound Track	8,800,400	0	14,003,988	0	22,804,388	786,008	0	1,116,665	0	1,902,673	24,707,061
West Volusia Racing, Inc.	1,643,217	0	1,709,842	0	3,353,059	286,457	0	161,130	0	447,587	3,800,646
Total Greyhound Tracks	\$96,845,028	\$5,803,028	\$130,698,377	\$12,302,928	\$245,649,361	\$8,575,981	\$302,023	\$9,500,549	\$638,703	\$19,017,256	\$264,666,617
Jai Alai Frontons											
Dania Jai Alai	\$4,078,093	\$0	\$4,773,612	\$0	\$8,851,705	\$34,230	\$0	\$41,474	\$0	\$75,704	\$8,927,409
Ft. Pierce Jai Alai	427,749	0	1,830,473	0	2,258,222	12,741	0	43,672	0	56,413	2,314,635
Hamilton Jai Alai and Poker	685	0	0	0	685	0	0	0	0	0	685
Miami Jai Alai	4,967,859	0	5,549,646	0	10,517,505	97,795	0	94,469	0	192,264	10,709,769
Ocala Poker and Jai Alai	33,450	0	0	0	33,450	0	0	0	0	0	33,450
Orlando Jai Alai	618,018	0	144,640	0	762,658	248,525	0	14,295	0	262,820	1,025,478
Summer Jai Alai	1,398,053	0	1,454,176	0	2,852,229	61,112	0	62,955	0	124,067	2,976,296
Summersport Enterprises, LLC	2,768,576	0	4,009,646	0	6,778,222	28,454	0	49,284	0	77,738	6,855,960
Total Jai Alai Frontons	\$14,292,483	\$0	\$17,762,193	\$0	\$32,054,676	\$482,857	\$0	\$306,149	\$0	\$789,006	\$32,843,682
Thoroughbred Racing Associations											
Calder Race Course, Inc.	\$14,744,819	\$40,757,085	\$12,558,423	\$128,503,943	\$196,564,270	\$1,245,034	\$3,415,436	\$909,019	\$14,531,033	\$20,100,522	\$216,664,792
Gulfstream Park Racing Association, Inc.	40,662,333	22,698,865	26,532,526	36,565,543	126,459,267	6,437,770	2,187,020	3,325,228	2,719,863	14,669,881	141,129,148
Tampa Bay Downs, Inc.	18,167,235	7,152,704	29,319,962	31,136,439	85,776,340	2,249,687	515,404	2,981,218	2,166,110	7,912,419	93,688,759
Tropical Park, Inc.	6,717,759	12,972,364	6,123,743	39,708,842	65,522,708	1,350,206	3,180,992	1,241,744	12,167,158	17,940,100	83,462,808
Total Thoroughbred Tracks	\$80,292,146	\$83,581,018	\$74,534,654	\$235,914,767	\$474,322,585	\$11,282,697	\$9,298,852	\$8,457,209	\$31,584,164	\$60,622,922	\$534,945,507
Harness Racing Associations											
Isle Casino and Racing at Pompano Park	\$4,485,661	\$13,744,512	\$1,744,542	\$28,717,411	\$48,692,126	\$243,115	\$147,122	\$97,314	\$333,846	\$821,397	\$49,513,523
Quarter Horse Racing Associations											
South Florida Racing Association, LLC (Hialeah Park)	\$1,104,834	\$63,942	\$195,968	\$47,356	\$1,412,100	\$0	\$0	\$0	\$0	\$0	\$1,412,100
TOTAL FOR ALL TRACKS AND FRONTONS	\$197,020,152	\$103,192,500	\$224,935,734	\$276,982,462	\$802,130,848	\$20,584,650	\$9,747,997	\$18,361,221	\$32,556,713	\$81,250,581	\$883,381,429

TOTAL INTERTRACK WAGERING HANDLE BY GUEST

Fiscal Year 2010/2011

HOST PERMITHOLDER

GUEST FACILITY	HOST PERMITHOLDER									
	DAYTONA	DERBY LANE	FLAGLER	H&T GAMING	JACKSONVILLE	LICENSE ACQUISITIONS	MARDI GRAS	NAPLES-Ft. MYERS	ORANGE PARK	PALM BEACH
Greyhound Permitholders										
Daytona Beach Kennel Club, Inc.	\$0	\$366,387	\$1,393,176	\$233,845	\$487,866	\$446,881	\$114,758	\$208,561	\$424,675	\$940,721
Derby Lane (St. Petersburg Kennel Club, Inc.)	533,471	0	383,361	150,252	747,628	921,537	125,999	1,079,114	705,398	3,036,123
Ebro Greyhound Park	0	787,190	0	0	138,932	245,837	0	0	245,550	730,282
Flagler Dog Track	201,275	887,126	0	1,137,818	482,161	948,160	999,152	1,759,701	431,946	2,767,456
H&T Gaming, Inc., d/b/a Mardi Gras Racetrack	615,327	607,317	5,408,815	0	528,507	591,566	0	765,851	384,054	1,868,623
Jacksonville Kennel Club, Inc.	0	0	0	0	0	0	0	0	0	10,092
Jefferson County Kennel Club, Inc.	0	695,521	0	0	328,899	0	0	0	243,927	0
License Acquisitions, LLC, d/b/a Palm Beach Greyhound Racing	133,546	0	70,582	0	0	0	18,057	230,385	633,362	0
Mardi Gras Racetrack and Gaming Center	31,252	366,607	0	0	0	172,789	0	514,478	7,811	546,858
Melbourne Greyhound Park, LLC	155,438	393,886	113,678	28,647	215,474	456,888	29,796	337,016	208,692	1,392,892
Naples-Ft. Myers Greyhound Track	147,412	666,655	937,937	264,798	251,801	480,045	220,263	0	221,129	1,574,456
Orange Park Kennel Club, Inc.	1,059,342	1,937,902	643,612	254,058	0	1,070,707	230,097	1,304,207	0	3,310,287
Palm Beach Kennel Club	281,193	1,058,148	271,514	112,896	907,164	0	75,474	760,964	170,553	0
Penn Sanford, LLC, d/b/a Sanford-Orlando Kennel Club	341,016	57,447	810,022	0	465,118	842,349	163,484	268,399	569,949	1,008,979
Pensacola Greyhound Racing, LLP	0	0	0	0	1,314,372	0	0	0	1,379,297	0
SOKC, LLC, d/b/a Sanford-Orlando Kennel Club	190,811	1,072,784	250,955	645,922	187,451	0	340,887	633,368	0	1,543,543
Sarasota Kennel Club, Inc.	186,892	1,361,108	455,648	72,924	551,265	973,196	64,694	930,934	434,060	2,594,138
St. Johns Greyhound Park	250,360	435,948	127,688	103,288	702,196	493,665	84,596	369,363	621,633	1,438,087
Tampa Greyhound Track	480,577	2,816,044	381,625	155,547	645,449	924,835	122,800	1,007,240	595,236	2,815,201
West Volusia Racing, Inc.	0	504,371	0	309,717	0	0	507,197	224,449	0	514,490
Total Greyhound Permitholders	\$4,607,912	\$14,014,441	\$11,248,613	\$3,469,712	\$7,954,283	\$8,568,455	\$3,097,254	\$10,394,030	\$7,277,272	\$26,092,228
Jai Alai Permitholders										
Dania Jai Alai	\$0	\$0	\$373,710	\$630,615	\$0	\$0	\$554,562	\$342,778	\$0	\$0
Ft. Pierce Jai Alai	268,242	320,655	219,054	0	248,302	0	0	584,525	319,081	374,631
Hamilton Jai Alai and Poker	47,780	0	102,013	0	213,567	81,661	0	0	196,686	174,205
Miami Jai Alai	0	0	0	0	0	0	0	0	0	0
Ocala Poker and Jai Alai	114,451	297,904	84,180	29,501	203,152	182,066	21,124	208,217	170,654	608,420
Orlando Jai Alai	0	0	0	0	0	0	0	0	0	0
Summer Jai Alai	0	0	0	0	0	0	0	0	0	0
Summersport Enterprises, LLC	0	0	1,103,745	0	2,175	0	0	39,135	0	0
Total Jai Alai Permitholders	\$430,473	\$618,559	\$1,882,702	\$660,116	\$667,196	\$263,727	\$575,686	\$1,174,655	\$686,421	\$1,157,256
Thoroughbred Permitholders										
Calder Race Course, Inc.	\$0	\$0	\$0	\$0	\$0	\$0	\$0	\$0	\$0	\$0
Gulfstream Park Racing Association, Inc.	0	0	0	0	0	0	0	0	0	0
Ocala Breeders' Sales	0	204,193	0	0	113,916	190,052	0	0	113,828	568,035
Tampa Bay Downs, Inc.	92,236	1,171,088	0	0	287,625	306,041	0	354,884	251,289	1,047,541
Tropical Park, Inc.	0	0	0	0	0	0	0	0	0	0
Total Thoroughbred Permitholders	\$92,236	\$1,375,281	\$0	\$0	\$401,541	\$496,093	\$0	\$354,884	\$365,117	\$1,615,576
Harness Permitholders										
Isle Casino and Racing at Pompano Park	0	0	273,112	210,111	297,004	573,668	190,838	376,570	263,745	1,945,741
Quarter Horse Permitholders										
South Florida Racing Association, LLC (Hialeah Park)	0	0	0	0	0	0	0	0	0	0
TOTAL FOR ALL PERMITHOLDERS	\$5,130,621	\$16,008,281	\$13,404,427	\$4,339,939	\$9,320,024	\$9,901,943	\$3,863,778	\$12,300,139	\$8,592,555	\$30,810,801

CONTINUED ON NEXT PAGE

Note: Figures above include handle from charity/scholarship performances.

TOTAL INTERTRACK WAGERING HANDLE BY GUEST

GUEST FACILITY	HOST PERMITHOLDER								
	PENN SANFORD	SOKC, LLC	SARASOTA	ST. JOHNS	TAMPA GREYHOUND	WEST VOLUSIA RACING	DANIA	FT. PIERCE	MIAMI
Greyhound Permitholders									
Daytona Beach Kennel Club, Inc.	\$215,894	\$97,240	\$60,633	\$352,108	\$689,495	\$0	\$124,220	\$34,297	\$82,586
Derby Lane (St. Petersburg Kennel Club, Inc.)	345,987	190,289	412,910	1,149,550	0	163,447	251,288	148,954	715,634
Ebro Greyhound Park	0	0	189,436	504,184	791,264	0	122,422	1,524	0
Flagler Dog Track	56,043	73,991	147,320	621,428	817,082	66,414	0	0	0
H&T Gaming, Inc., d/b/a Mardi Gras Racetrack	318,579	251,172	217,267	372,724	797,210	74,038	179,812	0	0
Jacksonville Kennel Club, Inc.	0	0	0	0	0	0	0	0	0
Jefferson County Kennel Club, Inc.	0	0	0	451,893	597,732	0	75,947	0	0
License Acquisitions, LLC, d/b/a Palm Beach Greyhound Racing	188,772	0	32,799	142,172	488,540	0	57,978	0	143,248
Mardi Gras Racetrack and Gaming Center	38,896	107,014	201,539	326,958	87,215	164,049	115,363	0	0
Melbourne Greyhound Park, LLC	68,729	87,756	118,683	331,819	396,295	62,490	566,624	112,470	567,487
Naples-Ft. Myers Greyhound Track	65,469	56,570	124,111	477,954	562,997	49,988	0	0	0
Orange Park Kennel Club, Inc.	464,584	414,871	395,687	0	1,811,813	372,931	321,194	49,692	300,926
Palm Beach Kennel Club	224,873	342,717	172,036	1,262,359	497,232	160,979	346,783	78,536	339,122
Penn Sanford, LLC, d/b/a Sanford-Orlando Kennel Club	0	0	37,677	146,437	1,035,203	20,914	12,080	8,938	11,833
Pensacola Greyhound Racing, LLP	0	0	0	2,438,014	0	0	0	0	0
SOKC, LLC, d/b/a Sanford-Orlando Kennel Club	0	0	176,847	789,656	0	172,643	43,681	0	13,958
Sarasota Kennel Club, Inc.	32,817	178,069	0	680,894	1,511,764	89,010	0	0	0
St. Johns Greyhound Park	142,430	124,234	145,334	1,150,855	381,934	110,327	78,196	26,387	118,541
Tampa Greyhound Track	344,753	224,420	413,569	1,007,781	2,744,164	160,326	217,160	131,479	550,071
West Volusia Racing, Inc.	5,772	85,906	75,661	461,839	0	0	101,105	0	80,154
Total Greyhound Permitholders	\$2,513,598	\$2,234,249	\$2,921,509	\$12,668,625	\$13,209,940	\$1,667,556	\$2,613,853	\$592,277	\$2,923,560
Jai Alai Permitholders									
Dania Jai Alai	\$0	\$0	\$0	\$0	\$0	\$0	\$0	\$0	\$625,560
Ft. Pierce Jai Alai	0	0	0	445,861	139,145	129,003	4,638	0	500,055
Hamilton Jai Alai and Poker	75,701	0	0	0	218,383	0	0	15,029	4,034
Miami Jai Alai	0	0	0	0	0	0	0	0	0
Ocala Poker and Jai Alai	54,049	52,788	0	278,592	236,085	42,139	213,655	36,402	209,824
Orlando Jai Alai	0	0	0	0	0	0	807,893	175,984	733,145
Summer Jai Alai	0	0	0	0	0	0	0	786,134	0
Summersport Enterprises, LLC	0	0	0	0	0	0	0	138,495	89,584
Total Jai Alai Permitholders	\$129,750	\$52,788	\$0	\$724,453	\$593,613	\$171,142	\$1,026,186	\$1,152,044	\$2,162,202
Thoroughbred Permitholders									
Calder Race Course, Inc.	\$0	\$0	\$0	\$0	\$0	\$0	\$0	\$0	\$0
Gulfstream Park Racing Association, Inc.	0	0	0	0	0	0	0	0	0
Ocala Breeders' Sales	0	0	0	180,317	230,089	0	24,121	35,188	165,640
Tampa Bay Downs, Inc.	65,733	0	71,383	466,997	1,087,011	32,274	123,760	94,636	392,713
Tropical Park, Inc.	0	0	0	0	0	0	0	0	0
Total Thoroughbred Permitholders	\$65,733	\$0	\$71,383	\$647,314	\$1,317,100	\$32,274	\$147,881	\$129,824	\$558,353
Harness Permitholders									
Isle Casino and Racing at Pompano Park	1,840	0	787	444,395	0	0	1,027,166	0	0
Quarter Horse Permitholders									
South Florida Racing Association, LLC (Hialeah Park)	0	0	0	0	0	0	0	0	0
TOTAL FOR ALL PERMITHOLDERS	\$2,710,921	\$2,287,037	\$2,993,679	\$14,484,787	\$15,120,653	\$1,870,972	\$4,815,086	\$1,874,145	\$5,644,115

CONTINUED ON NEXT PAGE

Note: Figures above include handle from charity/scholarship performances.

TOTAL INTERTRACK WAGERING HANDLE BY GUEST

GUEST FACILITY	HOST PERMITHOLDER									TOTAL
	ORLANDO	SUMMER	SUMMERSPORT	CALDER	GULFSTREAM PARK	TAMPA BAY DOWNS	TROPICAL PARK	POMPANO PARK	HIALEAH PARK	
Greyhound Permitholders										
Daytona Beach Kennel Club, Inc.	\$0	\$43,999	\$183,553	\$5,111,731	\$167,429	\$1,152,163	\$1,622,461	\$1,270,449	\$14,352	\$15,839,480
Derby Lane (St. Petersburg Kennel Club, Inc.)	9,667	204,591	230,751	9,207,310	2,054,433	5,660,901	3,032,611	1,780,389	49,018	33,290,613
Ebro Greyhound Park	2,857	0	93,498	1,718,266	466,278	675,423	421,259	8,865	0	7,143,067
Flagler Dog Track	0	0	0	1,543,913	833,991	0	565,955	2,629,776	0	16,970,708
H&T Gaming, Inc., d/b/a Mardi Gras Racetrack	0	0	156,662	987,513	280,364	9,654	238,166	2,483,408	0	17,136,629
Jacksonville Kennel Club, Inc.	0	0	0	0	0	0	0	0	0	10,092
Jefferson County Kennel Club, Inc.	0	0	70,839	0	0	0	0	0	0	2,464,758
License Acquisitions, LLC, d/b/a Palm Beach Greyhound Racing	0	0	147,669	2,567,914	0	528,291	11,872,961	1,222,819	0	18,479,095
Mardi Gras Racetrack and Gaming Center	0	0	0	23,378	274,269	0	90,846	867,700	0	3,937,022
Melbourne Greyhound Park, LLC	35,929	124,307	449,340	6,521,318	2,336,832	3,910,656	2,299,765	601,784	0	21,924,691
Naples-Ft. Myers Greyhound Track	0	0	0	8,064,066	3,854,840	7,324,470	3,791,733	1,065,058	0	30,201,752
Orange Park Kennel Club, Inc.	11,621	93,658	238,510	4,334,978	1,050,145	2,261,160	1,281,360	202,925	0	23,416,267
Palm Beach Kennel Club	0	124,182	189,932	21,452,500	16,829,475	3,677,838	622,821	4,187,751	0	54,147,042
Penn Sanford, LLC, d/b/a Sanford-Orlando Kennel Club	0	0	54,023	3,486,385	75,697	718,900	1,824,950	891,819	0	12,851,619
Pensacola Greyhound Racing, LLP	0	0	0	656,757	387,558	83,762	227,300	0	0	6,487,060
SOKC, LLC, d/b/a Sanford-Orlando Kennel Club	0	9,874	0	2,195,610	1,431,032	2,833,020	0	775,836	0	13,307,878
Sarasota Kennel Club, Inc.	14,708	0	0	7,327,007	1,848,829	3,914,275	2,272,068	1,050,058	0	26,544,358
St. Johns Greyhound Park	2,686	35,416	56,140	4,435,415	1,094,884	2,262,516	1,493,814	831,245	0	17,117,178
Tampa Greyhound Track	14,007	164,345	209,470	7,439,099	1,618,271	4,388,596	2,136,446	1,453,869	47,138	33,209,518
West Volusia Racing, Inc.	0	0	0	0	1,224,411	1,965,299	26,886	536,759	14,496	6,638,512
Total Greyhound Permitholders	\$91,475	\$800,372	\$2,080,387	\$87,073,160	\$35,828,738	\$41,366,924	\$33,821,402	\$21,860,510	\$125,004	\$361,117,339
Jai Alai Permitholders										
Dania Jai Alai	\$56,902	\$182,831	\$0	\$430,496	\$565,458	\$0	\$145,776	\$1,649,784	\$0	5,558,472
Ft. Pierce Jai Alai	0	138,556	12,566	1,271,390	0	420,869	0	0	0	5,396,573
Hamilton Jai Alai and Poker	0	0	0	758,864	254	0	0	0	0	1,888,177
Miami Jai Alai	0	0	0	0	0	0	0	0	0	0
Ocala Poker and Jai Alai	10,558	56,076	166,602	1,737,095	429,404	1,077,603	598,403	313,141	0	7,432,085
Orlando Jai Alai	0	193,424	686,932	9,005,188	2,373,599	5,322,437	3,324,661	3,079,954	0	25,703,217
Summer Jai Alai	0	0	230,867	69,280	0	0	0	0	0	1,086,281
Summersport Enterprises, LLC	0	0	0	634,942	0	0	215,067	1,332,011	0	3,555,154
Total Jai Alai Permitholders	\$67,460	\$570,887	\$1,096,967	\$13,907,255	\$3,368,715	\$6,820,909	\$4,283,907	\$6,374,890	\$0	\$50,619,959
Thoroughbred Permitholders										
Calder Race Course, Inc.	\$0	\$0	\$0	\$0	\$0	\$531,924	\$0	\$3,306	\$0	535,230
Gulfstream Park Racing Association, Inc.	0	0	0	28,482,670	0	8,340,051	12,830,243	238,549	0	49,891,513
Ocala Breeders' Sales	0	43,298	40,618	7,319,803	2,162,739	4,178,143	2,282,097	531,267	0	18,383,344
Tampa Bay Downs, Inc.	0	102,574	126,512	16,143,043	6,023,692	0	4,976,920	1,884,591	0	35,102,543
Tropical Park, Inc.	0	0	0	0	20,123,435	4,365,778	0	0	0	24,489,213
Total Thoroughbred Permitholders	\$0	\$145,872	\$167,130	\$51,945,516	\$28,309,866	\$17,415,896	\$20,089,260	\$2,657,713	\$0	\$128,401,843
Harness Permitholders										
Isle Casino and Racing at Pompano Park	0	0	714,446	3,576,487	1,635,841	0	1,046,918	0	118,320	12,696,989
Quarter Horse Permitholders										
South Florida Racing Association, LLC (Hialeah Park)	0	0	0	0	0	0	0	0	0	0
TOTAL FOR ALL PERMITHOLDERS	\$158,935	\$1,517,131	\$4,058,930	\$156,502,418	\$69,143,160	\$65,603,729	\$59,241,487	\$30,893,113	\$243,324	\$552,836,130

CONTINUED FROM PREVIOUS PAGE

Note: Figures above include handle from charity/scholarship performances.

CHARITY AND SCHOLARSHIP PERFORMANCES

Each permitholder may operate up to five additional days designated as charity or scholarship days during their regular meet. Proceeds from these additional days are paid to approved charities, major state and private institutions of higher learning, community colleges, the Historical Resources Operating Trust Fund, or the Racing Scholarship Trust Fund (Board of Governors' Operations and Maintenance Trust Fund). Typically, the amount contributed to charitable organizations is determined by calculating the amount of taxes due to the state had it been a regular performance. A minimum of \$1,997,441 was paid to charitable organizations during Fiscal Year 2010/2011, bringing the total proceeds disbursed since 1985 to \$70,860,750.

RACING SCHOLARSHIP TRUST FUND

The Board of Governors, within the Department of Education, oversees the Board of Governors' Operations and Maintenance Trust Fund and the referenced contributions are used to provide scholarships to deserving students attending Florida's colleges and universities. A total of \$16,880,918 has been paid to this fund since the program began in 1949. The amount contributed to the fund this fiscal year is detailed below.

Racing Scholarship Trust Fund	
Washington County Kennel Club, Inc.	\$1,582
Total For 2010/2011 Fiscal Year	\$1,582

ABANDONED WINNING TICKETS

Abandoned pari-mutuel tickets are winning tickets that remain uncashed for a period of one year. The value of greyhound and jai alai abandoned tickets for live on-track races or games escheat to the state. These funds are deposited into the Department of Education's State School Trust Fund for the support and maintenance of Florida's public schools. Since 1957, the total paid into this fund is \$92,021,653. The amount collected in abandoned winning tickets for the State School Trust Fund for this fiscal year is detailed below.

Abandoned Winning Tickets	
Greyhound Permitholders	\$991,775
Jai Alai Permitholders	\$120,960
Total For 2010/2011 Fiscal Year	\$1,112,735

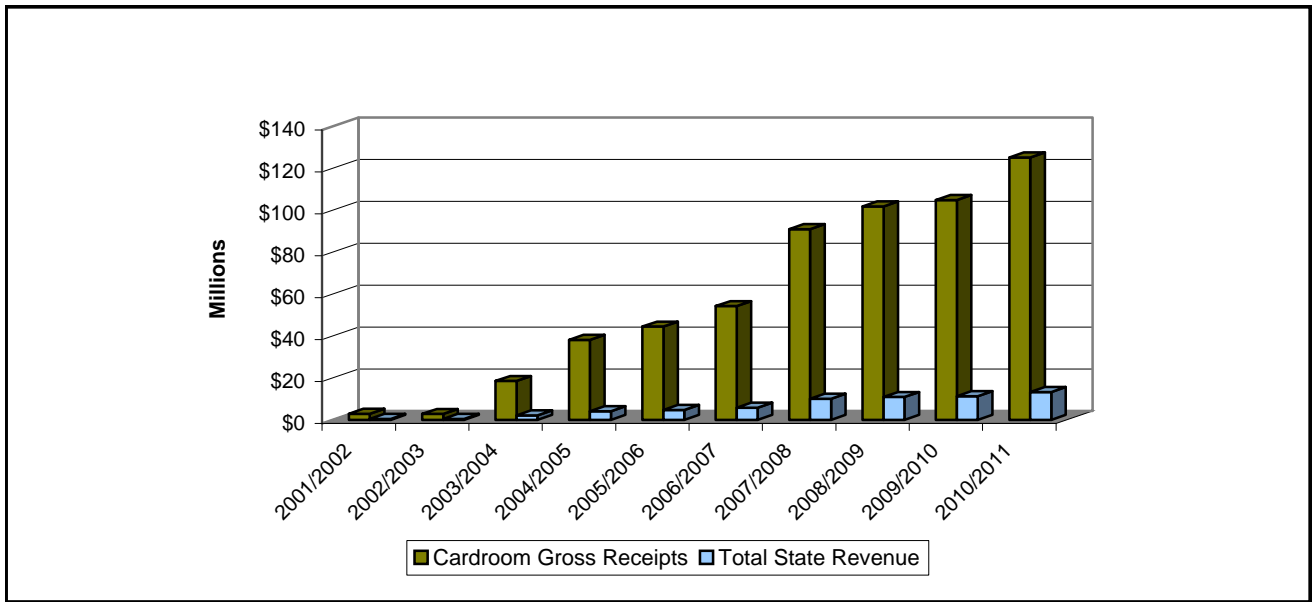
In harness and quarter horse racing, abandoned winning tickets are paid to the respective breeders' associations. Abandoned winning tickets from thoroughbred horse racing are retained by the permitholder.

CARDROOM COMPARATIVE DATA

During Fiscal Year 2010/2011, there were 23 licensed cardroom permitholders that operated at pari-mutuel facilities. The number of cardroom tables decreased from 746 in Fiscal Year 2009/2010, to 718 in Fiscal Year 2010/2011. Cardroom gross receipts increased from \$104,799,448 to \$125,141,080, and as a result, gross receipts tax increased from \$10,479,945, to \$12,514,108 this fiscal year. Table fees decreased from \$749,000 to \$718,000 this fiscal year. The overall result was an increase in total state revenue from \$11,228,945 to \$13,232,108 this fiscal year.

Cardroom tax revenue is distributed 50 percent between the Pari-Mutuel Wagering Trust Fund and the General Revenue Fund. In accordance with Section 849.086(13)(h), Florida Statutes, one quarter of the moneys deposited into the Pari-Mutuel Wagering Trust Fund must be distributed to counties and municipalities that approved the cardroom. In October 2011, the division distributed approximately \$1,564,240 to the counties/municipalities from cardroom gross receipts.

CARDROOM GROSS RECEIPTS AND TOTAL STATE REVENUE FISCAL YEARS 2001/2002 THROUGH 2010/2011



CARDROOM GROSS RECEIPTS AND STATE REVENUE SUMMARY

Fiscal Year	Total Cardroom Gross Receipts	Gross Receipts Tax	Table Fees Collected ^(A)	Total State Revenue (Gross Receipts Tax plus Table Fees)	Total State Revenue as a Percent of Gross Receipts
2001/2002	\$2,837,775	\$283,778	\$76,000	\$359,778	12.68%
2002/2003	\$2,767,231	\$276,723	\$74,500	\$351,223	12.69%
2003/2004	\$18,498,426	\$1,849,843	\$250,500	\$2,100,343	11.35%
2004/2005	\$38,089,764	\$3,808,977	\$238,000	\$4,046,977	10.62%
2005/2006	\$44,433,359	\$4,443,337	\$264,000	\$4,707,337	10.59%
2006/2007	\$54,208,544	\$5,420,855	\$325,500	\$5,746,355	10.60%
2007/2008	\$90,863,855	\$9,086,385	\$875,000	\$9,961,385	10.96%
2008/2009	\$101,700,243	\$10,170,024	\$698,000	\$10,868,024	10.69%
2009/2010	\$104,799,448	\$10,479,945	\$749,000	\$11,228,945	10.71%
2010/2011	\$125,141,080	\$12,514,108	\$718,000	\$13,232,108	10.57%

(A) Amount agrees with the number of approved cardroom tables per annual cardroom licenses, and reflects the number of tables in operation each fiscal year.

COMPONENTS OF CARDROOM REVENUE BY ASSOCIATION

Fiscal Year 2010/2011	County/ Municipality	Gross Receipts	Tournament Gross Receipts	Gross Receipts Tax ^(A)	Table Fees Collected	Total Taxes and Fees
Greyhound Racing Associations						
Daytona Beach Kennel Club, Inc./West Volusia Racing, Inc.	Volusia	10,044,026	386,771	1,043,080	50,000	1,093,080
Derby Lane (St. Petersburg Kennel Club, Inc.)	Pinellas	7,793,293	772,413	856,571	55,000	911,571
Ebro Greyhound Park	Washington	4,522,938	107,736	463,067	25,000	488,067
Flagler Dog Track	Dade	7,080,690	6,820	708,751	18,000	726,751
Jacksonville Kennel Club, Inc.	Duval	0	0	0	5,000	5,000
Jefferson County Kennel Club, Inc.	Jefferson	770,072	29,412	79,948	20,000	99,948
Mardi Gras Racetrack and Gaming Center/H & T Gaming, Inc.	Hallandale	4,554,137	43,150	459,729	33,000	492,729
Melbourne Greyhound Park, LLC	Brevard	4,166,310	226,600	439,291	43,000	482,291
Naples-Ft. Myers Greyhound Track	Lee	5,902,384	312,840	621,522	26,000	647,522
Orange Park Kennel Club, Inc.	Town of Orange Park	10,348,197	277,487	1,062,568	40,000	1,102,568
Palm Beach Kennel Club/License Acquisitions, LLC	Palm Beach	11,915,610	982,237	1,289,785	71,000	1,360,785
Pensacola Greyhound Racing, LLP	Escambia	4,099,774	366,495	446,627	25,000	471,627
Sarasota Kennel Club, Inc.	Sarasota	4,629,159	639,935	526,909	38,000	564,909
St. Johns Greyhound Park	St. Johns	5,403,372	260,982	566,435	33,000	599,435
Tampa Greyhound Track	Hillsborough	2,152,031	120,031	227,206	1,000 ^(B)	228,206
Total Greyhound Permitholders		<u>83,381,993</u>	<u>4,532,909</u>	<u>8,791,490</u>	<u>483,000</u>	<u>9,274,490</u>
Jai Alai Permitholders						
Dania Jai Alai/Summersport Enterprises, LLC	Hallandale	613,630	383,569	99,720	26,000	125,720
Ft. Pierce Jai Alai	St. Lucie	3,180,199	90,905	327,110	16,000	343,110
Hamilton Jai Alai and Poker	Hamilton	1,012,441	25,463	103,790	7,000	110,790
Miami/SummerJai Alai	Dade	537,434	3,400	54,083	14,000	68,083
Ocala Poker and Jai Alai	Marion	3,616,190	130,502	374,669	21,000	395,669
Total Jai Alai Permitholders		<u>8,959,894</u>	<u>633,839</u>	<u>959,373</u>	<u>84,000</u>	<u>1,043,373</u>
Thoroughbred Racing Associations						
Calder Race Course, Inc./Tropical Park, Inc.	Dade	3,847,522	306,276	415,380	29,000	444,380
Gulfstream Park Racing Association, Inc.	Broward	5,136,764	172,092	530,886	21,000	551,886
Tampa Bay Downs, Inc.	Hillsborough	4,749,245	263,419	501,266	26,000	527,266
Total Thoroughbred Permitholders		<u>13,733,531</u>	<u>741,787</u>	<u>1,447,532</u>	<u>76,000</u>	<u>1,523,532</u>
Harness Racing Associations						
Isle Casino and Racing at Pompano Park	Broward	11,902,008	1,255,120	1,315,713	48,000	1,363,713
TOTAL FOR ALL PERMITHOLDERS		<u>\$117,977,426</u>	<u>\$7,163,655</u>	<u>\$12,514,108</u>	<u>\$691,000</u>	<u>\$13,205,108</u>

(A) 1/8th of total gross receipts tax is distributed to counties or municipalities by October 1, of the following year.

(B) Permitholder operated with 21 card tables. The above amount reflects actual table fee(s) received during 2010/2011.

SLOT COMPARATIVE DATA

During Fiscal Year 2010/2011, the total amount wagered by patrons was \$5,054,297,731. Average daily revenue per slot machine was \$181. Total net slot revenue was \$357,325,388. In accordance with Section 551.106(2)(a), Florida Statutes, effective July 1, 2010 the tax rate on net slot machine revenue was reduced from 50 percent to 35 percent as a result the total taxes paid to the state was \$125,063,886, a decrease of nine percent in total paid slot taxes from the previous fiscal year.

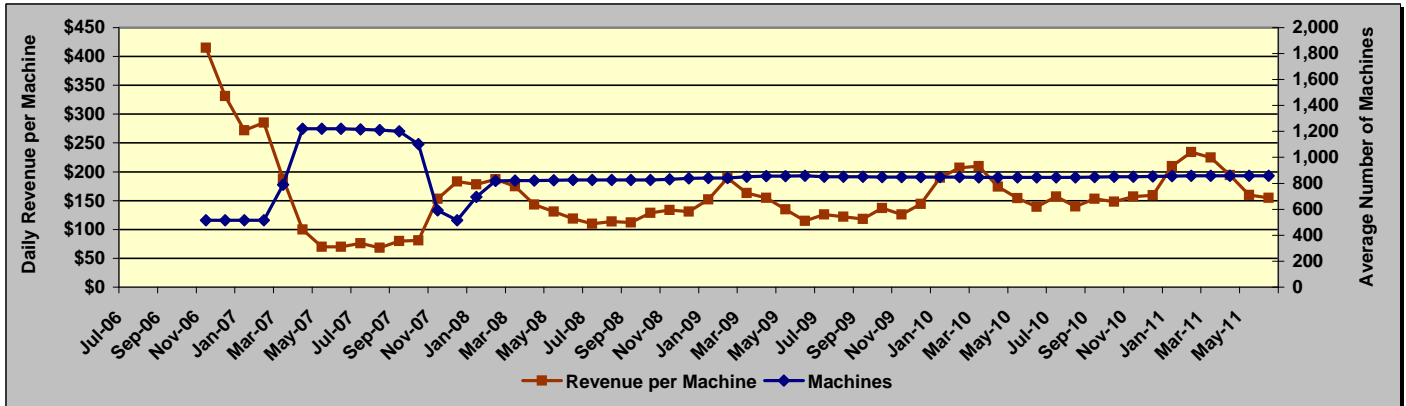
HISTORICAL SLOT FACILITY ACTIVITY		
Fiscal Year	Total Amount Wagered	Total State Revenue
2006/2007	\$1,114,108,466	\$49,620,582
2007/2008	\$3,023,981,126	\$120,560,316
2008/2009	\$2,701,341,777	\$103,895,349
2009/2010	\$3,840,468,455	\$138,125,105
2010/2011	\$5,054,297,731	\$125,063,886

FISCAL YEAR 2010/2011						
	Gulfstream Operations Began 11/15/2006	Mardi Gras Operations Began 12/28/2006	Pompano Park Operations Began 04/14/2007	West Flagler Operations Began 10/15/2009	Calder Operations Began 01/22/2010	TOTAL
Average Number of Machines	853	1,128	1,452	787	1,177	5,397
Number of Operating Days	365	365	365	365	365	365
Average Daily Revenue per Machine	\$174	\$129	\$201	\$254	\$164	\$181
Amount Wagered	\$782,049,879	\$724,397,808	\$1,612,232,142	\$1,009,189,516	\$926,428,386	\$5,054,297,731
Amount Won By Patrons	\$720,107,073	\$664,680,009	\$1,494,578,590	\$936,131,472	\$844,901,310	\$4,660,398,454
Promotional Credits	\$7,769,562	\$6,828,106	\$11,082,231	\$118,613	\$11,115,550	\$36,914,062
30-Day Unclaimed Tickets	\$44,223	\$31,914	\$199,521	\$37,028	\$27,487	\$340,173
Net Slot Machine Revenue	\$54,217,467	\$52,921,606	\$106,770,841	\$72,976,460	\$70,439,014	\$357,325,388
⁽¹⁾ State Tax Revenue	\$18,976,113	\$18,522,562	\$37,369,794	\$25,541,761	\$24,653,655	\$125,063,886
Permitter Revenue	\$35,241,354	\$34,399,044	\$69,401,047	\$47,434,699	\$45,785,359	\$232,261,502
Total State Revenue as a Percent of Amount Wagered	2.43%	2.56%	2.32%	2.53%	2.66%	2.47%

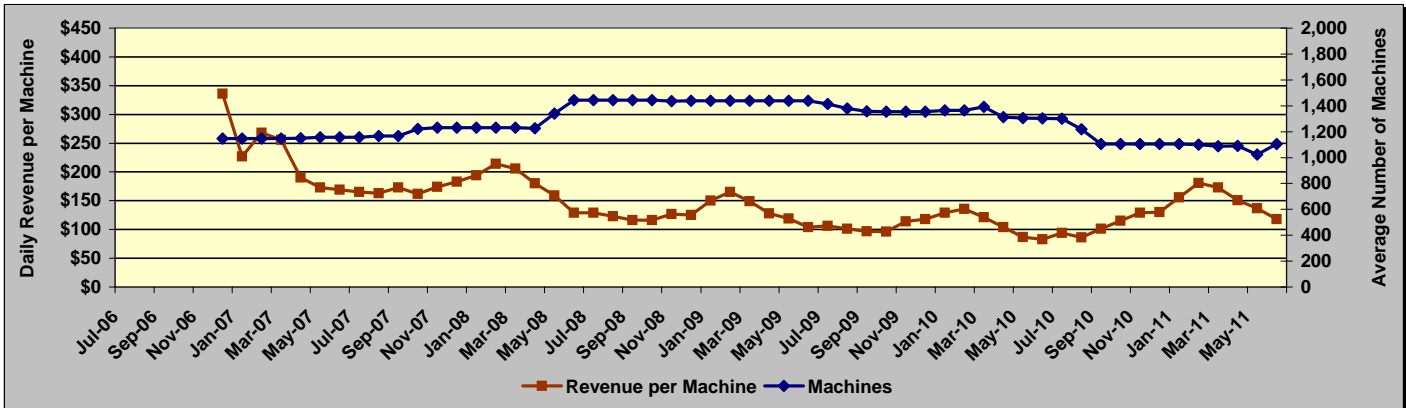
(1) Taxes paid on net slot machine revenue were accounted for by the division, then immediately transferred to the Department of Education's Educational Enhancement Trust Fund.

Daily Revenue per Machine Compared to Average Number of Machines For Fiscal Years 2006/2007 - 2010/2011

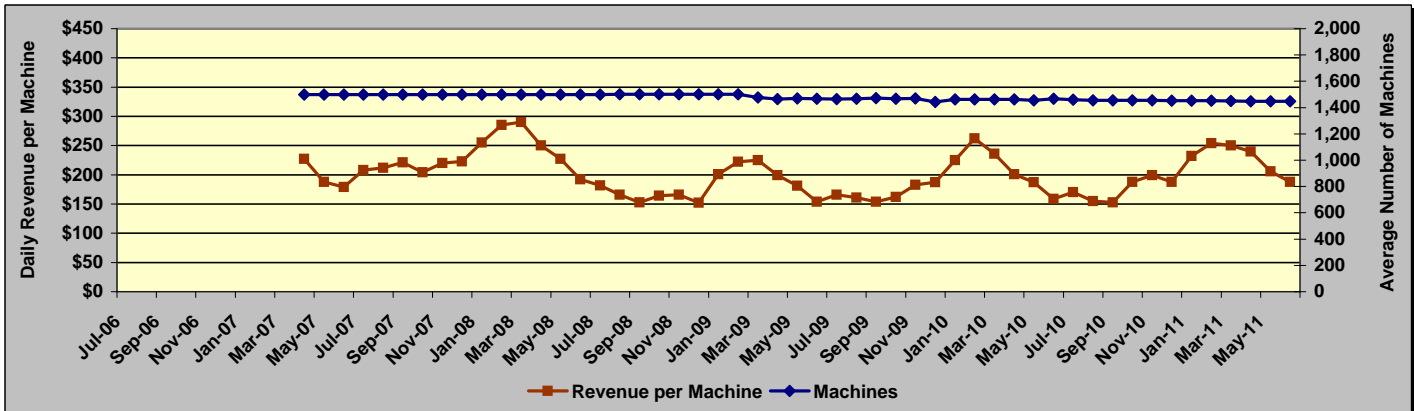
GULFSTREAM PARK RACING AND CASINO



MARDI GRAS RACETRACK AND GAMING CENTER

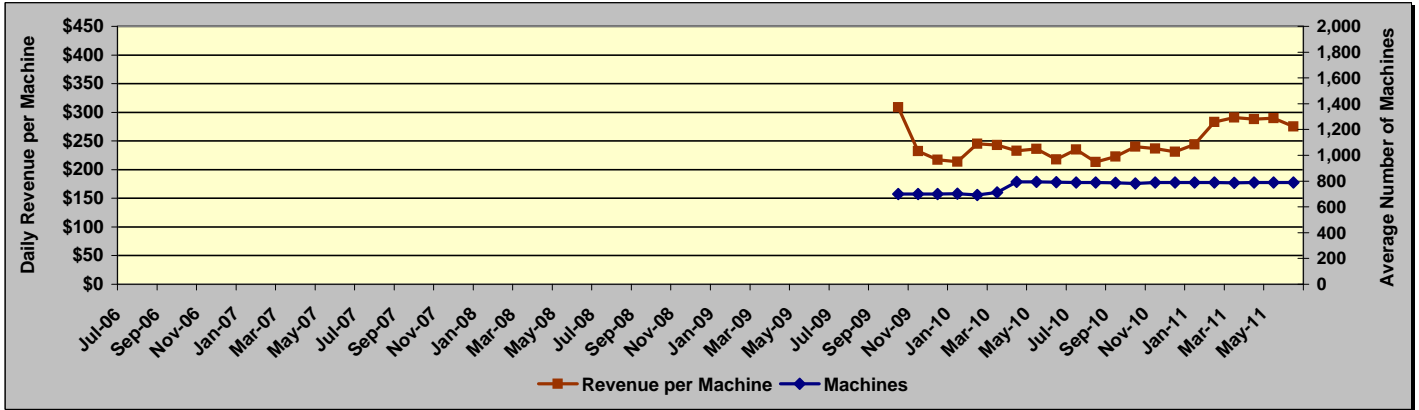


ISLE CASINO AND RACING AT POMPANO PARK

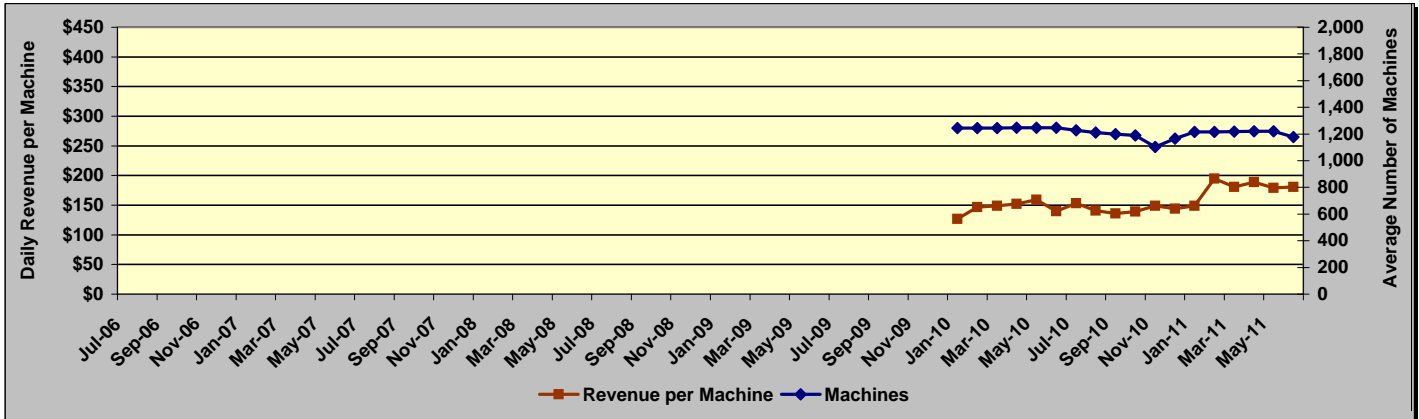


Daily Revenue per Machine Compared to Average Number of Machines For Fiscal Years 2006/2007 - 2010/2011

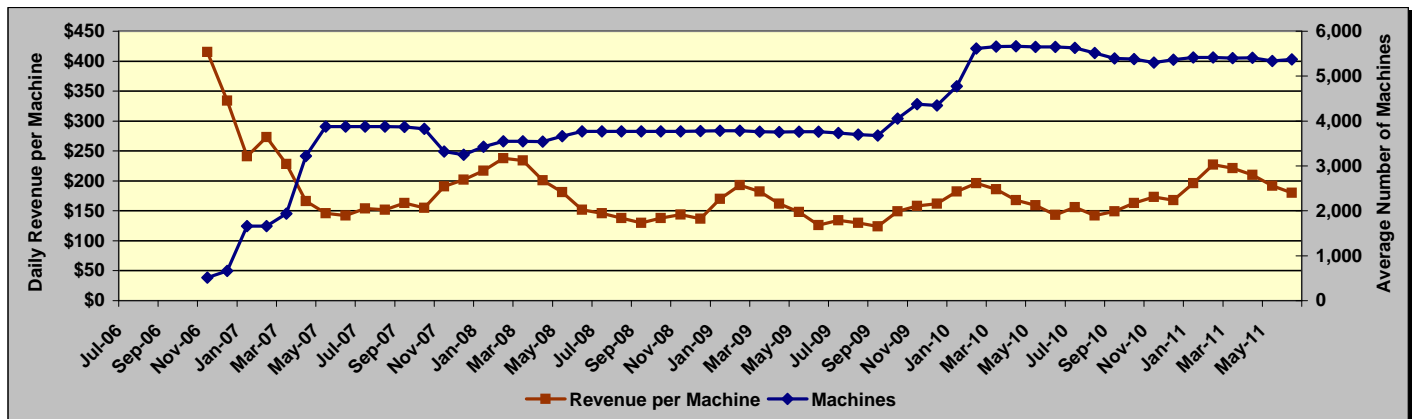
FLAGLER DOG TRACK AND MAGIC CITY CASINO



CALDER CASINO AND RACE COURSE

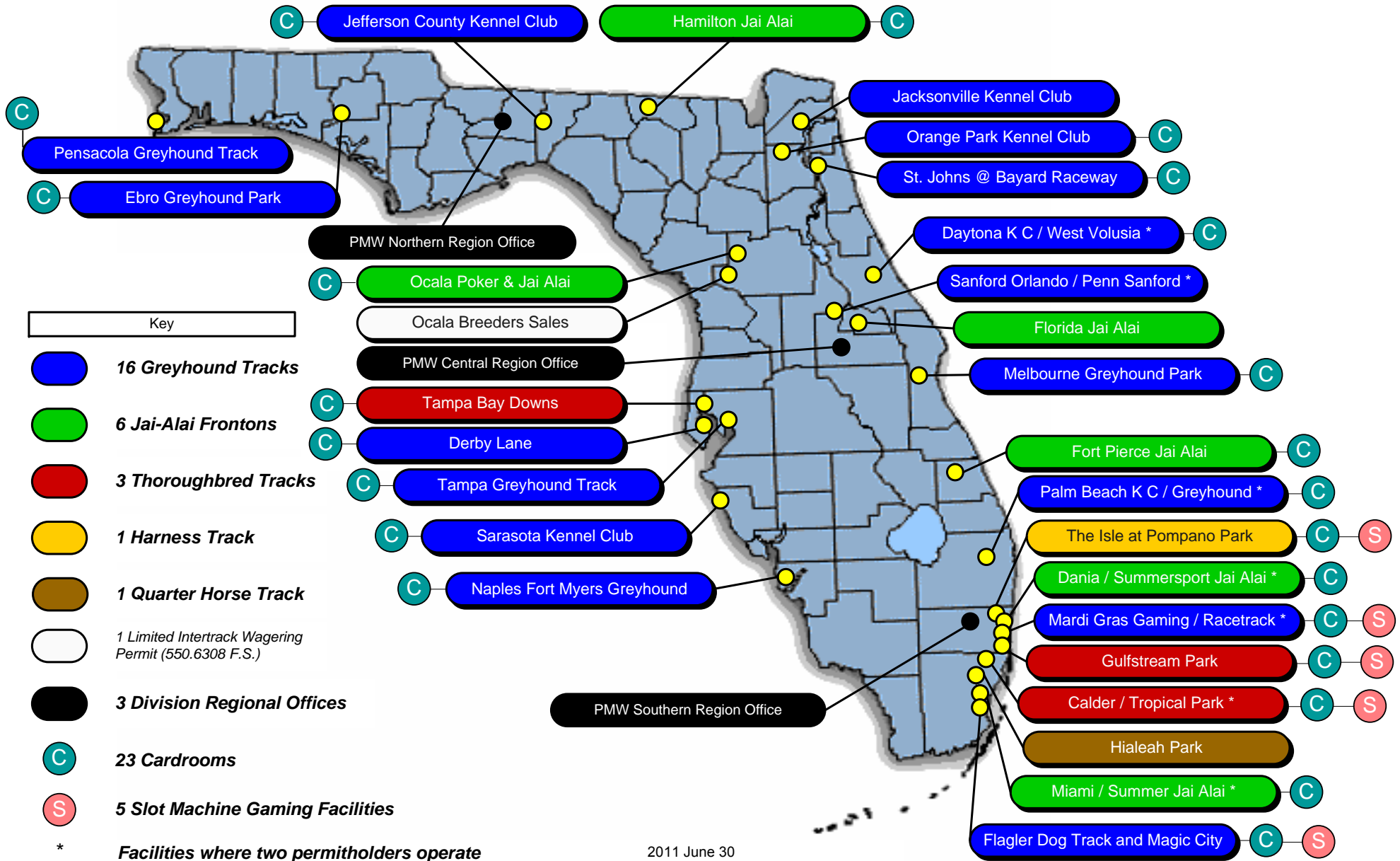


ALL FACILITIES COMBINED

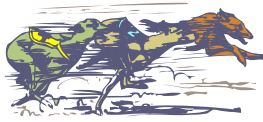


DATA BY ASSOCIATION/FACILITY

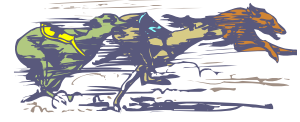
Pari-Mutuel Facilities by Permit Type



2011 June 30



GREYHOUND ASSOCIATIONS



Florida remains the leader in greyhound racing in the United States with 20 permitholders operating at 13 tracks throughout the state. A total of 3,681 performances, including charity and scholarship performances, were conducted during this past fiscal year, a decrease of five percent from the previous fiscal year.

During Fiscal Year 2010/2011, handle wagered at live greyhound performances decreased by 10 percent. Intertrack handle wagered on broadcasts of live Florida greyhound performances decreased by nine percent. Simulcast handle wagered on broadcasts of performances from outside the state decreased by 39 percent. Intertrack simulcast handle wagered on broadcast of performances from outside the state increased by 27 percent. Overall, total handle decreased by nine percent for the Florida greyhound industry.

Total paid attendance decreased by 16 percent from the prior year. The division reports only paid attendance and does not include free admissions or complimentary passes in its data. Total greyhound revenue to the state decreased by 35 percent during Fiscal Year 2010/2011. The greyhound industry accounted for approximately 29.1 percent of Florida's total revenue and 29.9 percent of total handle from pari-mutuel performances.

Based on audits conducted by the division, greyhound permitholders paid \$25,589,833 in purses during Fiscal Year 2010/2011, which includes stakes, fees and sponsor contributions.

All of Florida's greyhound permitholders actively sponsor greyhound adoption programs. Many of the state's greyhound tracks provide for on-site adoption booths, animal welfare, funding, advertising, special events and public information. Section 550.1647, Florida Statutes, provides greyhound permitholders with credits in an amount equal to the uncashed pari-mutuel tickets remitted in the prior state fiscal year to the state; which is applied against any taxes imposed the next fiscal year. Section 550.1647, Florida Statutes, requires each permitholder to pay an amount not less than 10 percent of the credit provided by this section to any bona fide organization that promotes or encourages the adoption of greyhounds. During Fiscal Year 2010/2011, total contributions provided to greyhound adoption units amounted to \$195,407, which exceeded the minimum statutory requirement.

Total Performances	3,681	Total Paid Attendance	406,089
Total Racing Days	2,549	Total Admission Tax	\$21,010

Daytona Beach Kennel Club, Inc.			
Volusia County			
Website	www.daytonagreyhound.com	Telephone	386.947.3305
Mailing/Street Address	960 South Williamson Boulevard, Daytona Beach, Florida 32114-7247	Fax	386.252.4808
Meet Period	07/01/2010 to 12/31/2010 and 4/4/2011 to 6/30/2011		
Racing Results		Purses Paid	
Performances	297	Pari-Mutuel Operations	\$884,299
Racing Days	214	Cardroom Operations	\$303,655
Paid Attendance	0	Total Purses Paid	\$1,187,954
Total Admission Tax	\$0		
Derby Lane			
St. Petersburg Kennel Club, Inc.			
Website	www.derbylane.com	Telephone	727.812.3236
Mailing Address	Post Office Box 22099, St. Petersburg, Florida 33742-2099	Fax	727.812.3305
Street Address	10490 Gandy Boulevard, St. Petersburg, Florida 33702-2395		
Meet Period	01/01/2011 to 06/30/2011		
Racing Results		Purses Paid	
Performances	208	Pari-Mutuel Operations	\$2,022,378
Racing Days	155	Cardroom Operations	\$180,600
Paid Attendance	0	Total Purses Paid	\$2,202,978
Total Admission Tax	\$0		

Ebro Greyhound ParkWashington County Kennel Club, Inc.
Washington County

Website	www.ebrogreyhoundpark.com	Telephone	850.234.3943
Mailing/Street Address	6558 Dog Track Road, Ebro, Florida 32437-1142	Fax	850.535.4442
Meet Period	07/01/2010 to 09/25/2010 and 05/20/2011 to 06/30/2011		
Racing Results		Purses Paid	
Performances	178	Pari-Mutuel Operations	\$355,858
Racing Days	90	Cardroom Operations	\$136,940
Paid Attendance	5,581	Total Purses Paid	\$492,798
Total Admission Tax	\$220		

Flagler Dog TrackWest Flagler Associates, Ltd.
Dade County

Website	www.magiccitycasino.com	Telephone	305.649.3000
Mailing Address	Post Office Box 350940, Miami, Florida 33135-0940	Fax	305.631.4529
Street Address	401 N.W. 38th Court, Miami, Florida 33126-5638		
Meet Period	07/01/2010 to 10/30/2010 and 6/2/2011 to 6/30/2011		
Racing Results		Purses Paid	
Performances	174	Pari-Mutuel Operations	\$1,030,352
Racing Days	109	Cardroom Operations	\$283,352
Paid Attendance	0	Slots Operations	\$2,111,394
Total Admission Tax	\$0	Total Purses Paid	\$3,425,098

H & T Gaming, Inc.

Broward County

See Mardi Gras Racetrack and Gaming Center's contact information for detail.

Meet Period	03/03/2011 to 05/14/2011 at Mardi Gras		
Racing Results		Purses Paid	
Performances	105	Pari-Mutuel Operations	\$718,270
Racing Days	53	Cardroom Operations	\$58,690
Paid Attendance	0	Slot Operations	\$538,290
Total Admission Tax	\$0	Total Purses Paid	\$1,315,250

Jacksonville Greyhound Racing, Inc.Jacksonville Greyhound Racing, Inc.
Duval County

Website	www.jaxkennel.com	Telephone	904.646.0001
Mailing Address	Post Office Box 959, Orange Park, Florida 32067-0959	Fax	904.646.0420
Street Address	1440 North McDuff Avenue, Florida 32205-2035		
Meet Period	07/01/2010 to 09/06/2010 and 06/01/2011 to 06/30/2011 at Orange Park		
Racing Results		Purses Paid	
Performances	113	Pari-Mutuel Operations	\$783,484
Racing Days	85	Cardroom Operations	\$179,343
Paid Attendance	0	Total Purses Paid	\$962,827
Total Admission Tax	\$0		

Jefferson County Kennel Club, Inc.

Jefferson County

Website	www.jckcgreyhounds.com	Telephone	850.997.2561
Mailing Address	Post Office Box 400, Monticello, Florida 32345-0400	Fax	850.997.3871
Street Address	3079 North Jefferson Street, Monticello, Florida 32344-5685		
Meet Period	07/01/2010 to 12/04/2010 and 01/28/2011 to 06/30/2011		
Racing Results		Purses Paid	
Performances	222	Pari-Mutuel Operations	\$442,990
Racing Days	220	Cardroom Operations	\$34,779
Paid Attendance	18,725	Total Purses Paid	\$477,769
Total Admission Tax	\$1,094		

License Acquisitions, LLC (Palm Beach Greyhound Racing)

Palm Beach County

See Palm Beach Kennel Club's contact information for detail.

Meet Period 10/01/2010 to 12/31/2010 at Palm Beach Kennel Club

Racing Results

Performances 117
Racing Days 90
Paid Attendance 28,433
Total Admission Tax \$1,784

Purses Paid

Pari-Mutuel Operations \$884,337
Cardroom Operations \$125,868
Total Purses Paid \$1,010,205

Mardi Gras Racetrack and Gaming Center

Hartman and Tyner, Inc.
Broward County

Website

www.playmardigras.com

Mailing Address

Post Office Box 2007, Hollywood, Florida 33022-2007

Telephone

954-924-3200

Street Address

831 North Federal Highway, Hallandale Beach, Florida 33009-2410

Fax

954.924.3143

Meet Period

12/12/2010 to 02/28/2011

Racing Results

Performances 108
Racing Days 55
Paid Attendance 0
Total Admission Tax \$0

Purses Paid

Pari-Mutuel Operations \$864,855
Cardroom Operations \$139,289
Slot Operations \$255,504
Total Purses Paid \$1,259,648

Melbourne Greyhound Park, LLC

Brevard County

Website

www.mgpark.com

Mailing/Street Address

1100 North Wickham Road, Melbourne, Florida 32935-8941

Telephone

321.259.9800

Fax

321.259.3437

Meet Period

01/14/2011 to 03/26/2011

Racing Results

Performances 102
Racing Days 62
Paid Attendance 18,392
Total Admission Tax \$158

Purses Paid

Pari-Mutuel Operations \$180,586
Cardroom Operations \$176,911
Total Purses Paid \$357,497

Naples-Ft. Myers Greyhound Track

Southwest Florida Enterprises, Inc.
Lee County

Website

www.naplesfortmyersdogs.com

Mailing Address

Post Office Box 2567, Bonita Springs, Florida 34133-2567

Telephone

239.992.2411

Street Address

10601 Bonita Beach Road, S.W., Bonita Springs, Florida 34135-5620

Fax

239.947.9244

Meet Period

11/05/2010 to 5/30/2011

Racing Results

Performances 406
Racing Days 204
Paid Attendance 162,283
Total Admission Tax \$13,306

Purses Paid

Pari-Mutuel Operations \$1,445,929
Cardroom Operations \$255,590
Total Purses Paid \$1,701,519

Orange Park Kennel Club, Inc.

Jacksonville Greyhound Racing, Inc.
Clay County

Website

www.jaxkennel.com

Mailing Address

Post Office Box 959, Orange Park, Florida 32067-0959

Telephone

904.646.0001

Street Address

455 Park Avenue, Orange Park, Florida 32073-3101

Fax

904.646.0420

Meet Period

09/08/2010 to 12/13/2010

Racing Results

Performances 111
Racing Days 83
Paid Attendance 0
Total Admission Tax \$0

Purses Paid

Pari-Mutuel Operations \$692,630
Cardroom Operations \$159,074
Total Purses Paid \$851,704

Palm Beach Kennel Club

Investment Corporation of Palm Beach
Palm Beach County

Website

www.pbkennelclub.com

Mailing/Street Address

1111 North Congress Avenue, West Palm Beach, Florida 33409-6317

Telephone

561.683.2222

Fax

561.684.5565

Meet Period

07/01/2010 to 09/30/2010 and 01/01/2011 to 06/30/2011

Racing Results

Performances 350
Racing Days 273
Paid Attendance 88,516
Total Admission Tax \$3,719

Purses Paid

Pari-Mutuel Operations \$2,956,447
Cardroom Operations \$381,164
Total Purses Paid \$3,337,611

Penn Sanford, LLC, d/b/a Sanford-Orlando Kennel Club

Seminole County

See SOKC, LLC's contact information for detail.**Meet Period** 07/02/2010 to 01/08/2011**Racing Results**

Performances	153
Racing Days	103
Paid Attendance	0
Total Admission Tax	0

Purses Paid

Pari-Mutuel Operations	\$672,714
Total Purses Paid	\$672,714

Pensacola Greyhound Racing, LLP

Escambia County

Websitewww.pensacolagreyhoundtrack.com**Mailing Address**

301 Dog Track Road, Pensacola, Florida 32591-2824

Street Address

951 Dog Track Road, Pensacola, Florida 32506-8236

Telephone

850.455.8595

Fax

850.453.8883

Meet Period

07/01/2010 to 10/31/2010 and 02/04/2011 to 06/30/2011

Racing Results

Performances	178
Racing Days	139
Paid Attendance	0
Total Admission Tax	\$0

Purses Paid

Pari-Mutuel Operations	\$626,140
Cardroom Operations	\$80,599
Total Purses Paid	\$706,739

SOKC, LLC, d/b/a Sanford-Orlando Kennel Club

Seminole County

Websitewww.sanfordorlandokc.com**Mailing/Street Address**

301 Dog Track Road, Longwood, Florida 32750-0280

Meet Period

01/10/2011 to 06/29/2011

Telephone

407.831.1600

Fax

407.831.3997

Racing Results

Performances	147
Racing Days	99
Paid Attendance	0
Total Admission Tax	\$0

Purses Paid

Pari-Mutuel Operations	\$689,585
Total Purses Paid	\$689,585

Sarasota Kennel Club, Inc.

Sarasota County

Websitewww.sarasotakennelclub.com**Mailing/Street Address**

5400 Bradenton Road, Sarasota, Florida 34234-2999

Meet Period

11/26/2010 to 05/07/2011

Telephone

941.355.7744

Fax

941.351.2207

Racing Results

Performances	207
Racing Days	139
Paid Attendance	84,159
Total Admission Tax	\$730

Purses Paid

Pari-Mutuel Operations	\$680,806
Cardroom Operations	\$187,634
Total Purses Paid	\$868,440

St. Johns Greyhound Park (Bayard Raceways, Inc.)

Jacksonville Greyhound Racing, Inc.

St. Johns County

Websitewww.jaxkennel.com**Mailing Address**

Post Office Box 959, Orange Park, Florida 32067-0959

Street Address

6322 Racetrack Road, Jacksonville, Florida 32259-3107

Telephone

904.646.0001

Fax

904.646.0420

Meet Period

12/15/2010 to 05/30/2011 at Orange Park

Racing Results

Performances	189
Racing Days	142
Paid Attendance	0
Total Admission Tax	\$0

Purses Paid

Pari-Mutuel Operations	\$1,331,837
Cardroom Operations	\$313,238
Total Purses Paid	\$1,645,075

Tampa Greyhound Track

Associated Outdoor Clubs, Inc.

Hillsborough County

Websitewww.luckyscards.com**Mailing Address**

Post Office Box 8096, Tampa, Florida 33674-8096

Street Address

8300 North Nebraska Avenue, Tampa, Florida 33604-3107

Telephone

813.932.4313

Fax

813.932.5048

Meet Period

07/01/2010 to 12/31/2010 at Derby Lane

Racing Results

Performances	208
Racing Days	156
Paid Attendance	0
Total Admission Tax	\$0

Purses Paid

Pari-Mutuel Operations	\$1,699,896
Cardroom Operations	\$251,883
Total Purses Paid	\$1,951,779

West Volusia Racing, Inc.

Volusia County

See Daytona Beach Kennel Club's contact information for detail.**Meet Period** 01/01/2011 to 04/02/2011 at Daytona Beach Kennel Club**Racing Results**

Performances	108
Racing Days	78
Paid Attendance	0
Total Admission Tax	\$0

Purses Paid

Pari-Mutuel Operations	\$359,072
Cardroom Operations	\$113,576
Total Purses Paid	\$472,648



JAI ALAI FRONTON ASSOCIATIONS



Florida was the first state in the nation to conduct jai alai performances, with the first fronton being built in 1926. There are currently eight jai alai permitholders operating at six frontons throughout Florida. In fact, Florida is now the only state where jai alai games are conducted. A total of 866 performances, including charity and scholarship performances, were conducted during this past fiscal year, a decrease of 12 percent from the previous fiscal year.

During Fiscal Year 2010/2011, handle wagered at live jai alai performances decreased by 18 percent. Intertrack handle wagered on broadcasts of live Florida jai alai performances decreased by 28 percent. There are no longer any other states that conduct jai alai; therefore, there was no simulcast or intertrack simulcast handle. Total handle declined by 24 percent for the Florida Jai Alai industry.

Revenue to the state from jai alai wagering decreased by 35 percent during Fiscal Year 2010/2011. The jai alai industry accounted for approximately 3.9 percent of Florida's total revenue and 3.7 percent of total handle from pari-mutuel performances. Permitholders reported paying \$5,863,196 in players' awards.

Total paid attendance decreased by 100 percent from the prior year. The division reports only paid attendance and does not include free admissions or complimentary passes in its data.

Total Performances	866	Total Paid Attendance	0
Total Gaming Days	597	Total Admission Tax	\$0

Dania Jai Alai			
A Division of the Aragon Group A Boyd Gaming Company Broward County			
Website	www.dania-jai-alai.com	Telephone	954.927.2841
Mailing Address	Post Office Box 96, Dania Beach, Florida 33004-0096	Fax	954.927.0149
Street Address	301 East Dania Beach Boulevard, Dania Beach, Florida 33004-3016		
Meet Period	12/01/2010 to 06/30/2011		
Gaming Results			
Performances	209	Paid Attendance	0
Live Operating Days	150	Total Admission Tax	\$0
Players' Awards Paid	\$1,642,835		
Ft. Pierce Jai Alai			
Florida Gaming Centers, Inc. St. Lucie County			
Website	www.fla-gaming.com	Telephone	772.464.7500
Mailing/Street Address	1750 South Kings Highway, Ft. Pierce, Florida 34945-3099	Fax	772.464.0099
Meet Period	07/02/2010 to 08/28/2010		
Miscellaneous Revenue to State	\$353	(See Section 550.9511(4), Florida Statutes, for detail.)	
Gaming Results			
Performances	52	Paid Attendance	0
Live Operating Days	34	Total Admission Tax	\$0
Players' Awards Paid	\$626,000		
Hamilton Jai Alai and Poker			
Richmond Entertainment, Inc. Hamilton County			
Website	www.hamiltondownsjaialai.com	Telephone	386.638.0011
Mailing/Street Address	6968 US Highway 129 South, Jasper, Florida 32052-6774	Fax	386.638.0033
Meet Period	09/14/2010 to 11/19/2010		
Gaming Results			
Performances	98	Paid Attendance	0
Live Operating Days	49	Total Admission Tax	\$0
Players' Awards Paid	\$93,684		

Miami Jai AlaiFlorida Gaming Centers, Inc.
Dade County**Website** www.fla-gaming.com**Mailing/Street Address** 3500 N.W. 37th Avenue, Miami, Florida 33142-4923**Telephone** 305.633.6400**Fax** 305.634.7013**Meet Period** 11/01/2010 to 05/06/2011**Gaming Results**

Performances	209	Paid Attendance	0
Live Operating Days	159	Total Admission Tax	\$0
Players' Awards Paid	\$1,708,000		

Ocala Poker and Jai AlaiSecond Chance Jai Alai, LLC
Marion County**Website** www.ocalapoker.com**Mailing Address** Post Office Box 580, Orange Lake, Florida 32681**Street Address** 4601 N.W. Highway 318, Reddick, Florida 32686**Telephone** 352.591.2345**Fax** 352.591.3402**Meet Period** 03/15/2011 to 04/10/2011**Miscellaneous Revenue to State** \$20,320 (See Section 550.9511(4), Florida Statutes, for detail.)**Gaming Results**

Performances	41	Paid Attendance	0
Live Operating Days	21	Total Admission Tax	\$0
Players' Awards Paid	\$150,545		

Orlando Jai AlaiRB Jai Alai, LLC
Seminole County**Website** www.orlandojaijai.com**Mailing/Street Address** 6405 South Highway 17-92, Fern Park, Florida 32730-2057**Telephone** 407.339.6221**Meet Period** 01/07/2011 to 02/26/2011**Fax** 407.831.4689**Miscellaneous Revenue to State** \$67,880 (See Section 550.9511(4), Florida Statutes, for detail.)**Gaming Results**

Performances	47	Paid Attendance	0
Live Operating Days	32	Total Admission Tax	\$0
Players' Awards Paid	\$134,896		

Summer Jai Alai

Dade County

See Miami Jai Alai's contact information for detail.**Meet Period** 05/07/2011 to 06/30/2011 at Miami Jai Alai**Miscellaneous Revenue to State** \$93,760 (See Section 550.9511(4), Florida Statutes, for detail.)**Gaming Results**

Performances	62	Paid Attendance	0
Live Operating Days	47	Total Admission Tax	\$0
Players' Awards Paid	\$541,000		

Summersport Enterprises, LLCA Boyd Gaming Company
Broward County**See Dania Jai Alai's contact information for detail.****Meet Period** 07/01/2010 to 11/30/2010 at Dania Jai Alai**Gaming Results**

Performances	148	Paid Attendance	0
Live Operating Days	105	Total Admission Tax	\$0
Players' Awards Paid	\$966,235		



THOROUGHBRED ASSOCIATIONS



Florida continues to be a premier thoroughbred racing state with four permitholders operating at three tracks located in Central and South Florida. A total of 323 regular performances, including charity and scholarship performances, were conducted during this past fiscal year, a increase of two percent from the previous fiscal year.

During Fiscal Year 2010/2011, handle on live thoroughbred performances increased five percent and handle from intertrack wagering decreased two percent. Simulcast handle wagered on broadcasts of performances from outside the state decreased by five percent while intertrack simulcast handle decreased by 10 percent. Overall, total handle declined by six percent for the Florida thoroughbred industry.

Total revenue to the state during Fiscal Year 2010/2011, decreased nine percent from the prior year. The thoroughbred industry accounted for approximately 58.9 percent of Florida's total revenue and 60.6 percent of total handle from pari-mutuel performances.

Total paid attendance increased by two percent from the prior year. The division reports only paid attendance, and does not include free admissions or complimentary passes in its data.

Total Performances	323	Total Paid Attendance	101,715
Total Racing Days	323	Total Admission Tax	\$25,429

Calder Race Course, Inc.			
Churchill Downs, Inc. Dade County			
Website	www.calderracecourse.com	Telephone	305.625.1311
Mailing Address	Post Office Box 1808, Miami Gardens, Florida 33055-0808		(Dade)
Street Address	2101 N.W. 27th Avenue, Miami Gardens, Florida 33056-1461	Fax	954.523.4324
			(Broward)
Meet Period	07/01/2010 to 10/17/2010 and 04/25/2011 to 06/30/2011	Fax	305.625.2505
Racing Results		Purses Paid	
Performances	102	Pari-Mutuel Operations	\$12,767,736
Racing Days	102	Cardroom Operations	\$425,830
Paid Attendance	0	Slot Operations	\$6,711,048
Total Admission Tax	\$0	Total Purses Paid	\$19,904,614
Gulfstream Park Racing Association, Inc.			
MI Developments, Inc. Broward County			
Website	www.gulfstreampark.com	Telephone	954.457.6213
Mailing/Street Address	901 South Federal Highway, Hallandale Beach, Florida 33009-7124	Fax	954.457.6913
Meet Period	01/05/2011 to 04/24/2011		
Racing Results		Purses Paid	
Performances	79	Pari-Mutuel Operations	\$23,100,641
Racing Days	79	Cardroom Operations	\$813,829
Paid Attendance	0	Slot Operations	\$7,725,989
Total Admission Tax	\$0	Total Purses Paid	\$31,640,459
Tampa Bay Downs, Inc.			
Hillsborough County			
Website	www.tampabaydowns.com	Telephone	813.855.4401
Mailing Address	Post Office Box 2007, Oldsmar, Florida 34677-7007	Fax	813.854.3539
Street Address	11225 Race Track Road, Tampa, Florida 33626-3122		
Meet Period	12/11/2010 to 05/08/2011		
Racing Results		Purses Paid	
Performances	90	Pari-Mutuel Operations	\$13,350,105
Racing Days	90	Cardroom Operations	\$1,134,895
Paid Attendance	101,715	Total Purses Paid	\$14,485,000
Total Admission Tax	\$25,429		
Tropical Park, Inc.			
Churchill Downs, Inc. Dade County			
See Calder's contact information for detail.			
Meet Period	10/21/2010 to 01/04/2011 at Calder Race Course		
Racing Results		Purses Paid	
Performances	52	Pari-Mutuel Operations	\$7,559,026
Racing Days	52	Slot Operations	\$1,611,084
Paid Attendance	0	Total Purses Paid	\$9,170,110
Total Admission Tax	\$0		



QUARTER HORSE RACING ASSOCIATION



As of June 30, 2011, Hialeah Park is the only permitholder conducting quarter horse racing performances in the State of Florida. It was determined eligible for designation as a National Historic Landmark by the Secretary of the Interior in 1988, and was listed on the National Register of Historic places in 1979. In Fiscal Year 2010/2011, a total of 24 performances were conducted.

During Fiscal Year 2010/2011, handle wagered at live quarter horse performances decreased by 31 percent. In Fiscal Year 2009/2010 intertrack handle wagered on broadcasts of live Florida quarter horse performances was \$651, and Fiscal Year 2010/2011, increased to \$195,968. Simulcast handle wagered on broadcasts of performances from outside the state increased by 100 percent while intertrack simulcast handle increased by 100 percent. Overall, total handle decreased by 12 percent for the Florida quarter horse industry.

Total revenue from quarter horse racing to the state during Fiscal Year 2010/2011, decreased by eight percent. The quarter horse industry accounted for approximately 0.4 percent of Florida's total revenue and 0.2 percent of total handle from pari-mutuel performances. The division reports only paid attendance and does not include free admissions or complimentary passes in its data.

Total Performances	24	Total Paid Attendance	0
Total Racing Days	24	Total Admission Tax	\$0

Hialeah Park			
South Florida Racing Association, LLC Dade			
Website	www.hialeahparkracing.com	Telephone	305.885.8000
Mailing Address	Post Office Box 158, Hialeah, Florida 33011	Fax	305.887.8006
Street Address	2200 East 4th Avenue, Hialeah, Florida 33010		
Meet Period	12/03/2010 to 01/23/2011		
Racing Results		Purses Paid	
Performances	24	Pari-Mutuel Operations	\$2,400,000
Racing Days	24	Total Purses Paid	\$2,400,000
Paid Attendance	0		
Total Admission Tax	\$0		



HARNESS ASSOCIATIONS



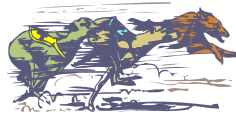
As of June 30, 2011, Pompano Park is the only permit holder conducting harness horse racing performances in the State of Florida. A total of 139 performances, including charity and scholarship performances, were conducted during this past fiscal year, a decrease of one percent from the previous fiscal year.

During Fiscal Year 2010/2011, handle wagered at live harness performances increased by eight percent. Intertrack handle wagered on broadcasts of live Florida harness performances increased by 13 percent. Simulcast handle wagered on broadcasts of performances from outside the state decreased by 14 percent while intertrack simulcast handle decreased by 12 percent. Overall, total handle decreased by 10 percent for the Florida harness industry.

Total revenue to the state during Fiscal Year 2010/2011, decreased by five percent from the prior year. The harness industry accounted for approximately 7.7 percent of Florida's total revenue and 5.6 percent of total handle from pari-mutuel performances. The division reports only paid attendance and does not include free admissions or complimentary passes in its data.

Total Performances	139	Total Paid Attendance	0
Total Racing Days	140	Total Admission Tax	\$0

Isle Casino and Racing at Pompano Park			
PPI, Inc. Broward County			
Website	pompano-park.isleofcapricasinos.com	Telephone	954.972.2000
Mailing/Street Address	1800 S.W. Third Street, Pompano Beach, Florida 33069-3106	Fax	954.978.0337
Meet Period	10/16/2010 to 06/29/2011		
Racing Results		Purses Paid	
Performances	139	Pari-Mutuel Operations	\$8,555,760
Racing Days	140	Cardroom Operations	\$2,626,891
Paid Attendance	0	Slot Operations	\$2,500,030
Total Admission Tax	\$0	Total Purses Paid	\$13,682,681



SUMMARY

PARI-MUTUEL INDUSTRY

During Fiscal Year 2010/2011, the total handle wagered for all industries exceeded \$883 million, a decrease of eight percent from the prior fiscal year. Total pari-mutuel performances, including charity and scholarship performances, conducted during Fiscal Year 2010/2011, decreased by six percent from the previous fiscal year.

The state realized revenue from performances of approximately \$11.6 million, a decrease of 18 percent from the prior fiscal year. Of the \$11.6 million collected, greyhound permit holders accounted for 29.1 percent, thoroughbreds for 58.9 percent, harness for 7.7 percent, jai alai for 3.9 percent and quarter horse for 0.4 percent.

Total paid attendance decreased 17 percent from the prior year. The division reports only paid attendance and does not include free admission or complimentary passes in its data.



HORSE RACING

Promotional Programs for Florida-Bred Horses

Florida breeder promotions and award programs are administered by private breeders' and owners' associations organized to promote ownership and breeding of race horses in the State of Florida. Each association conducts its own campaign to enhance the horse breeding industry in the state and provides breeders' and owners' awards of up to 20 percent of announced gross purses. The Florida Standardbred Breeders' and Owners' Association is funded by the breaks and uncashed tickets from live performances and one percent of the intertrack handle. The Quarter Horse Breeders' Association is funded by the breaks and the uncashed tickets from live races and one percent of the live and intertrack handle. The Florida Thoroughbred Breeders' and Owners' Association (FTBOA) awards program is funded by 0.955 percent of the live, simulcast and intertrack handle, as well as 3.475 percent of the gross revenue from out-of-state wagers on Florida races.

To date, the Florida thoroughbred breeding industry has produced 49 national champions. Florida also produced "Affirmed", still the last horse to have swept the Triple Crown (1978). Ocala/Marion County, Florida, is home to some of the leading breeding farms in the country. The industry boasts 19 classic wins (Kentucky Derby, Preakness Stakes and Belmont Stakes), 23 Breeders' Cup Day champions and six horses of the year.

The FTBOA funds the Florida-bred Stakes Program, which is implemented at Florida's Thoroughbred racetracks. Through a percentage of pari-mutuel handle, Florida Thoroughbred permitholders contributed \$7,006,397 to the FTBOA during Fiscal Year 2010/2011. The FTBOA paid out \$5,095,654 in Breeders' Awards, \$228,000 in Stallion Owners' Awards and \$1,422,000 through the Florida-bred Stakes Program. The Florida-bred Stakes Program includes "The Sunshine Millions" at Gulfstream Park, "The Florida Million" at Calder Race Course/Tropical Park, "Florida Cup Day" at Tampa Bay Downs and additional funds for supplements to Florida-bred Preferred Stakes Races during the Calder/Tropical and Tampa Bay Downs' meets.

The Florida Standardbred Breeders' and Owners' Association, a non-profit organization and the recognized representative of horsemen in the State of Florida, is the designated association for the allocation and distribution of funds for Florida-bred racing. Promotional activities include providing breeder and stallion awards for eligible Florida-bred horses during Pompano Park's 2010/2011, meet as well as awards for Florida Breeders' Stakes races. A series of races and awards were also provided for two and three-year-old standardbreds to prepare for the winter meet at Pompano Park. The total amount of funds collected and distributed to the Florida Standardbred horsemen throughout the year exceeded \$660,000.

Note: Promotional program information is provided by respective Breeders' and Owners' Associations.

**UNIVERSITY OF FLORIDA
COLLEGE OF VETERINARY MEDICINE RACING LABORATORY**

The Racing Laboratory in the College of Veterinary Medicine at the University of Florida is an International Organization for Standardization ISO 17025 accredited laboratory that employs various procedures to detect and identify prohibited drugs, medications, stimulants, depressants, hypnotics, local anesthetics or drug-masking agents in the blood, urine or other bodily fluids of racing horses and greyhounds.

During Fiscal Year 2010/2011, the laboratory received and processed 87,458 samples and performed 500,961 analyses. The vigilant monitoring of samples by the laboratory serves to deter the use of prohibited drugs in racing animals in Florida.

	Horse Urine/Blood	Greyhound Urine ¹	Investigative
Samples Received	16,148	71,310	9
Samples Analyzed	16,155	51,151	9
Number of Analyses	198,519	302,442	11
Positives	135	49	N/A

¹ Volume Not Sufficient For Testing 20,392 (28.6% of total number of samples received)

DRUG POSITIVES FOR FISCAL YEAR 2010/2011		
<i>Types of Positives (ARCI Drug Class)</i>	<i>Horse</i>	<i>Greyhound</i>
Acepromazine Metabolite (3)	2	0
Benzoyllecgonine (1)	1	6
Boldenone (4)	1	0
Caffeine (2)/Theophylline (3)	1	0
Caffeine (2)/Theophylline (3)/ Theobromine (4)	0	1
Carbazochrome (n/a)	1	0
Clenbuterol (3)	3	0
Cocaine (1)/ Benzoyllecgonine (1)/ Ecgonine Methylester (1)	0	3
Dimethyl Sulfoxide (5)	22	0
Flunixin (4)	1	0
Fluphenazine (2)	6	0
Glycopyrrolate (3)	2	0
Glycopyrrolate (3)/ Clenbuterol (3)	1	0
Guaifenesin (4)	1	0
Hydromorphone (1)	1	0
Hydroxydetomidine (3)	1	0
Methocarbamol (4)	1	0
Methocarbamol (4)/ Guaifenesin (4)	1	0
Naproxen (4)	1	0
Omeprazole Sulfide (5)	21	0
Oxilofrine (2)	5	0
Phenobarbital (2)	1	0
Phenylbutazone (N/A)/Oxyphenbutazone (4)	13	6
Phenylpropanolamine (3)/ Ephedrine (2)	2	0
Pyrilamine (3) reported as O-Desmethylpyrilamine	8	0
Procaine (3)	0	17
Ranitidine (5)	5	0
Reserpine (2)	3	0
Stanozolol (4)	10	0
Testosterone (4)	7	0
Testosterone (4)/Nandrolone (4)	9	0
Testosterone (4)/ Phenylbutazone (N/A)/ Oxyphenbutazone (4)	1	0
Theobromine (4)	1	10
Theobromine (4)/Theophylline (3)	0	6
Torseamide (3)	2	0
TOTALS	135	49

- Class (1): Stimulant and depressant drugs that have the highest potential to affect performance and that have no generally accepted medical use in the racing horse.
- Class (2): Drugs that have a high potential to affect performance, but less of a potential than drugs in Class 1.
- Class (3): Drugs that may or may not have generally accepted medical use in the racing horse, but the pharmacology of which suggests less potential to affect performance than drugs in Class 2.
- Class (4): This class includes therapeutic medications that would be expected to have less potential to affect performance than those in Class 3.
- Class (5): This class includes therapeutic medications for which concentration limits have been established by the racing jurisdictions as well as certain miscellaneous agents such as dimethylsulfoxide (DMSO) and other medications as determined by the regulatory bodies.

FINANCIAL STATEMENTS

**DIVISION OF PARI-MUTUEL WAGERING
SUMMARY OF STATE REVENUE FROM PARI-MUTUEL, CARDROOM,
AND SLOT ACTIVITIES
FISCAL YEAR 2010/2011**

State Revenue From Regular Performances	
Tax on Attendance	\$ 35,679
Daily License Fees	2,238,342
Tax on Handle	9,384,035
State Revenue From Pari-Mutuel Performances	<u>\$ 11,658,056</u>
Other State Revenue	
Occupational Licenses	\$ 558,539
Fingerprint Fees	240,687
Escheated Tickets From Greyhound and Jai Alai ⁽¹⁾	1,112,735
Racing Scholarship Funds ⁽¹⁾	1,582
PMW Trust Fund - Drug Fines	32,670
Miscellaneous Revenue	7,426
General Revenue Fund - Other Fines	28,325
Other State Revenue	<u>\$ 1,981,964</u>
Total Pari-Mutuel State Revenue	<u>\$ 13,640,020</u>
State Revenue From Cardrooms	
Table Fees	\$ 691,000
Gross Receipts ⁽²⁾	12,514,108
Occupational Licenses	137,233
Total State Revenue From Cardrooms	<u>\$ 13,342,341</u>
State Revenue From Slots	
Compulsive/Addictive Gambling Fee	\$ 2,000,000
Facility License Fee	19,500,000
Slot Taxes ⁽³⁾	125,063,886
Fingerprint Fees	19,736
Occupational Licenses	230,430
Miscellaneous Revenue	153,051
Miscellaneous Fines	66,025
Total State Revenue From Slots	<u>\$ 147,033,128</u>
Total State Revenue Generated	<u><u>\$ 174,015,489</u></u>

⁽¹⁾ Escheated tickets from greyhound racing and jai alai gaming; and Racing Scholarship Funds are distributed to the Department of Education.

⁽²⁾ One-half of cardroom gross receipts is deposited into General Revenue.

⁽³⁾ Slot taxes are distributed to the Department of Education.

**DEPARTMENT OF BUSINESS & PROFESSIONAL REGULATION
DIVISION OF PARI-MUTUEL WAGERING
BALANCE SHEET
SPECIAL REVENUE FUND
FOR FISCAL YEAR ENDED JUNE 30, 2011**

	2011	2010
ASSETS		
Cash with State Treasurer	\$ 3,441,821.94	\$ 947,149.53
Investments at cost	3,481,389.40	3,890,310.20
Accounts receivable	44,299.62	129,378.00
Taxes receivable	1,757,582.44	5,448,540.47
Allowance for uncollectibles	(2,238.25)	(1,290.50)
Interest receivable	24,236.42	21,871.62
Due from state funds	31.00	-
	<u>8,747,122.57</u>	<u>10,435,959.32</u>
TOTAL ASSETS	\$ 8,747,122.57	\$ 10,435,959.32
 LIABILITIES & FUND EQUITY		
Liabilities:		
Accounts payable	\$ 90,435.28	\$ 115,596.18
Accrued salaries	149,748.67	126,750.01
Deposits payable	-	15,000.00
Due to other funds	145.64	-
Due to other state agencies	110,886.76	2,809,181.10
Due to general revenue	897,868.78	585,112.07
Compensated absences	982.19	2,860.98
	<u>1,250,067.32</u>	<u>3,654,500.34</u>
Total Liabilities	<u>1,250,067.32</u>	<u>3,654,500.34</u>
 Fund Equity		
Unreserved	<u>7,497,055.25</u>	<u>6,781,458.98</u>
Total Fund Equity	<u>7,497,055.25</u>	<u>6,781,458.98</u>
TOTAL LIABILITIES & FUND EQUITY	\$ <u>8,747,122.57</u>	\$ <u>10,435,959.32</u>

The financial statements and notes are for informational purposes only.

DEPARTMENT OF BUSINESS AND PROFESSIONAL REGULATION
DIVISION OF PARI-MUTUEL WAGERING
STATEMENT OF REVENUES, EXPENDITURES & CHANGES IN FUND BALANCE - BUDGET & ACTUAL
SPECIAL REVENUE FUND
FOR FISCAL YEAR ENDED JUNE 30, 2011

	<u>FINAL BUDGET</u>	<u>2011 ACTUAL</u>	<u>VARIANCE</u>	<u>2010 ACTUAL</u>
REVENUES:				
Fees, Charges, Commissions and Sales	\$ 20,303,663.00	\$ 25,223,991.21	\$ 4,920,328.21	\$ 20,430,028.72
Licenses and Permits	802,085.00	695,509.17	(106,575.83)	801,077.75
Taxes	159,183,839.00	139,768,472.28	(19,415,366.72)	155,781,016.05
Fines, Forfeits, Judgments and Settlements	104,406.00	98,495.00	(5,911.00)	93,835.00
Interest and Dividends, Net	96,421.00	253,239.14	156,818.14	312,182.43
Refunds	250,000.00	155,431.47	(94,568.53)	24,005.75
Miscellaneous Receipts	96,720.00	-	(96,720.00)	76,356.50
Total Revenues	<u>180,837,134.00</u>	<u>166,195,138.27</u>	<u>(14,641,995.73)</u>	<u>177,518,502.20</u>
EXPENDITURES				
CURRENT OPERATING				
Salaries	6,931,724.00	6,043,131.02	888,592.98	5,836,044.25
Other Personal Services	1,720,514.00	1,153,445.33	567,068.67	1,347,204.21
Other Operating Expenditures	1,009,523.00	729,693.38	279,829.62	784,154.49
Operation of Motor Vehicles	74,743.00	59,348.29	15,394.71	48,132.76
Risk Management	87,061.00	87,061.00	-	98,091.00
State Attorney-Slots	184,611.00	184,611.00	-	183,097.00
PMW Lab Services	2,266,000.00	2,266,000.00	-	2,366,000.00
PMW Compliance System	296,476.00	246,396.00	50,080.00	246,396.00
Tr/DMS/HR SVCS/STW Contract	55,027.00	55,027.00	-	63,696.00
Cardroom Tax Distribution	1,500,000.00	1,309,993.08	190,006.92	1,271,253.07
Other Contracted Services	313,353.00	115,270.99	198,082.01	(80,733.94)
Compulsive Gambling Prevention	750,000.00	690,000.00	60,000.00	690,000.00
OPERATING CAPITAL OUTLAY	31,395.00	3,703.60	27,691.40	53,143.09
Acquisition of Motor Vehicles	54,802.00	28,316.00	26,486.00	-
Assessment for Fingerprinting	460,400.00	291,242.75	169,157.25	307,565.00
Service Charge to General Revenue	4,100,000.00	3,370,164.53	729,835.47	3,079,437.66
Refunds	150,000.00	65,306.75	84,693.25	22,243.57
Transfer to FDLE Slots Investigation	437,532.00	432,000.00	5,532.00	220,000.00
Transfers to Other Funds	168,189,489.00	123,748,831.28	44,440,657.72	140,213,886.74
Transfers to General Revenue	40,500,000.00	24,600,000.00	15,900,000.00	22,500,000.00
Total Expenditures	<u>229,112,650.00</u>	<u>165,479,542.00</u>	<u>63,633,108.00</u>	<u>179,249,610.90</u>
Excess (Deficiency) of Revenues Over (Under) Expenditures	<u>(48,275,516.00)</u>	<u>715,596.27</u>	<u>48,991,112.27</u>	<u>(1,731,108.70)</u>
FUND BALANCE JULY 1, 2010	6,781,458.98	6,781,458.98	-	8,512,567.68
FUND BALANCE JUNE 30, 2011	<u>\$ (41,494,057.02)</u>	<u>\$ 7,497,055.25</u>	<u>\$ 48,991,112.27</u>	<u>\$ 6,781,458.98</u>
	(1)	(1)		

(1) Does not include budget of \$ 45,000,000 for category 190000 Investments. Actual expenditures for category 190000 were closed into the investment account.

The financial statements and notes are for informational purposes only.

CARDROOM, PARI-MUTUEL, AND
SLOT STATUTE MATRIX

STATUTE TOPIC	GREYHOUND	JAI ALAI	THOROUGHBRED	HARNESS	QUARTER HORSE
FEES					
Daily License Fees On Live / On-track Handle	\$80 per race. 550.0951(1)(a)	\$40 per game. 550.0951(1)(a)	\$100 per race. 550.0951(1)(a)	\$100 per race. 550.0951(1)(a)	\$100 per race. 550.0951(1)(a)
Daily License Fees On Simulcast Handle	\$80 per race, but not to exceed \$500 per day. 550.0951(1)(a)	\$40 per game, but not to exceed \$500 per day. 550.0951(1)(a)	\$100 per race, but not to exceed \$500 per day. 550.0951(1)(a)	\$100 per race, but not to exceed \$500 per day. 550.0951(1)(a)	\$100 per race, but not to exceed \$500 per day. 550.0951(1)(a)
Cardroom Table Fees	Annual fee for each facility is \$1,000 for each table to be operated at the cardroom. 849.086(5)(d)	Annual fee for each facility is \$1,000 for each table to be operated at the cardroom. 849.086(5)(d)	Annual fee for each facility is \$1,000 for each table to be operated at the cardroom. 849.086(5)(d)	Annual fee for each facility is \$1,000 for each table to be operated at the cardroom. 849.086(5)(d)	Annual fee for each facility is \$1,000 for each table to be operated at the cardroom. 849.086(5)(d)
TAXES					
Tax On Admissions	<p>15% of admission charge, or 10 cents, whichever is greater, for entrance to facility and grandstand. 550.0951(2)(a)</p> <p>No tax is imposed on free passes or complimentary cards. 550.0951(2)(b) and (c)</p> <p>15% of admission charge, or 10 cents, whichever is greater, for entrance to the cardroom. This tax only applies if a separate admission fee is charged for entry into the cardroom facility. If a single admission fee is charged allowing entry to both or either the pari-mutuel facility and the cardroom facility, the tax is payable only once and shall be payable pursuant to Chapter 550. 849.086(13)(b)</p>	<p>15% of admission charge, or 10 cents, whichever is greater, for entrance to facility and grandstand. 550.0951(2)(a)</p> <p>No tax is imposed on free passes or complimentary cards. 550.0951(2)(b) and (c)</p> <p>15% of admission charge, or 10 cents, whichever is greater, for entrance to the cardroom. This tax only applies if a separate admission fee is charged for entry into the cardroom facility. If a single admission fee is charged allowing entry to both or either the pari-mutuel facility and the cardroom facility, the tax is payable only once and shall be payable pursuant to Chapter 550. 849.086(13)(b)</p>	<p>15% of admission charge, or 10 cents, whichever is greater, for entrance to facility and grandstand. 550.0951(2)(a)</p> <p>No tax is imposed on free passes or complimentary cards. 550.0951(2)(b) and (c)</p> <p>15% of admission charge, or 10 cents, whichever is greater, for entrance to the cardroom. This tax only applies if a separate admission fee is charged for entry into the cardroom facility. If a single admission fee is charged allowing entry to both or either the pari-mutuel facility and the cardroom facility, the tax is payable only once and shall be payable pursuant to Chapter 550. 849.086(13)(b)</p>	<p>15% of admission charge, or 10 cents, whichever is greater, for entrance to facility and grandstand. 550.0951(2)(a)</p> <p>No tax is imposed on free passes or complimentary cards. 550.0951(2)(b) and (c)</p> <p>15% of admission charge, or 10 cents, whichever is greater, for entrance to the cardroom. This tax only applies if a separate admission fee is charged for entry into the cardroom facility. If a single admission fee is charged allowing entry to both or either the pari-mutuel facility and the cardroom facility, the tax is payable only once and shall be payable pursuant to Chapter 550. 849.086(13)(b)</p>	<p>15% of admission charge, or 10 cents, whichever is greater, for entrance to facility and grandstand. 550.0951(2)(a)</p> <p>No tax is imposed on free passes or complimentary cards. 550.0951(2)(b) and (c)</p> <p>15% of admission charge, or 10 cents, whichever is greater, for entrance to the cardroom. This tax only applies if a separate admission fee is charged for entry into the cardroom facility. If a single admission fee is charged allowing entry to both or either the pari-mutuel facility and the cardroom facility, the tax is payable only once and shall be payable pursuant to Chapter 550. 849.086(13)(b)</p>
Tax On Cardroom Gross Receipts	Each cardroom operator shall pay a tax to the state of 10% of the cardroom operation's monthly gross receipts. 849.086(13)(a)	Each cardroom operator shall pay a tax to the state of 10% of the cardroom operation's monthly gross receipts. 849.086(13)(a)	Each cardroom operator shall pay a tax to the state of 10% of the cardroom operation's monthly gross receipts. 849.086(13)(a)	Each cardroom operator shall pay a tax to the state of 10% of the cardroom operation's monthly gross receipts. 849.086(13)(a)	Each cardroom operator shall pay a tax to the state of 10% of the cardroom operation's monthly gross receipts. 849.086(13)(a)

This matrix represents a summary of 2010 Statutes. Please refer to the cite noted by statutory topic for specific language governing pari-mutuel wagering.

STATUTE TOPIC	GREYHOUND	JAI ALAI	THOROUGHBRED	HARNESS	QUARTER HORSE
Tax On Live / On-track Handle	5.5% of handle, except for charity performances which is 7.6% of handle. <u>550.0951(3)(b)1.</u>	Effective July 1, 2000, a permitholder may not be taxed at a higher rate than 2%. <u>550.0951(3)(d)</u>	0.5% of handle. <u>550.09515(2)(a)</u>	0.5% of handle. <u>550.09512(2)(a)</u>	1% of handle. <u>550.0951(3)(a)</u>
Tax On Simulcast Handle	Allows permitholders to receive greyhound races from out-of-state, and are subject to taxation under 550.0951 and 550.09511. <u>550.3551(4)</u>	Allows permitholders to receive jai alai games from out-of-state, and are subject to taxation under 550.0951 and 550.09511. <u>550.3551(4)</u>	Allows permitholders to receive horse races from out-of-state, and are subject to taxation under 550.0951, 550.09512, and 550.09515. <u>550.3551(3) through 550.3551(3)(c)</u>	Allows permitholders to receive horse races from out-of-state, and are subject to taxation under 550.0951, 550.09512, and 550.09515. <u>550.3551(3) through 550.3551(3)(c)</u>	Allows permitholders to receive horse races from out-of-state, and are subject to taxation under 550.0951, 550.09512, and 550.09515. <u>550.3551(3) through 550.3551(3)(c)</u>
Tax On Intertrack and Intertrack Simulcast Handle	<p>5.5% of intertrack and intertrack simulcast handle; except for the intertrack handle from charity performances at a guest track within the market area of the host, the tax is 7.6%. <u>550.0951(3)(b)1 and 550.0951(3)(c)1</u></p> <p>0.5% of intertrack and intertrack simulcast handle, if the guest is located outside market area of host and within market area of thoroughbred track conducting a live meet. <u>550.0951(3)(c)1.</u></p> <p>3.9% of intertrack and intertrack simulcast handle, for permitholders located in an area of the state where there are only 3 greyhound permitholders, located in 3 contiguous counties. <u>550.0951(3)(c)2.</u></p> <p>3.9% of intertrack and intertrack simulcast handle, for greyhound permitholders located in the same market area specified in 550.615(9). <u>550.0951(3)(c)2.</u></p>	<p>7.1% of intertrack and intertrack simulcast handle. <u>550.0951(3)(b)2. and 550.0951(3)(c)1.</u></p> <p>0.5% of intertrack and intertrack simulcast handle, if the guest is located outside market area of host and within market area of thoroughbred track conducting a live meet. <u>550.0951(3)(c)1.</u></p> <p>3.3% of intertrack and intertrack simulcast handle, if permitholder restricted from operating live on a year-round basis, and tax paid on intertrack handle exceeds that paid during 92/93 State Fiscal Year. <u>550.09511(3)(a)</u></p> <p>6.1% of intertrack and intertrack simulcast handle, for jai alai permitholders located in the market area as specified in 550.615(6) or (9), until the tax paid on intertrack handle in the current state fiscal year exceeds that paid during 92/93 State Fiscal Year, then tax on handle is 2.3%. <u>550.0951(3)(c)2.</u></p>	<p>2% of intertrack handle. <u>550.0951(3)(c)1.</u></p> <p>2.4% of intertrack simulcast handle. <u>550.0951(3)(c)1. and 550.09515(5)</u></p> <p>0.5% of intertrack and intertrack simulcast handle, if host and guest are thoroughbred permitholders, or if the guest is located outside market area of host and within market area of thoroughbred track conducting a live meet. <u>550.0951(3)(c)1.</u></p> <p>0.5% of intertrack simulcast handle, if guest track is a thoroughbred track located more than 35 miles from host track. <u>550.09515(5)</u></p>	<p>3.3% of intertrack handle. <u>550.0951(3)(c)1.</u></p> <p>1.5% of intertrack simulcast handle. <u>550.0951(3)(c)1.</u></p> <p>0.5% of intertrack and intertrack simulcast handle, if the guest is located outside market area of host and within market area of thoroughbred track conducting a live meet. <u>550.0951(3)(c)1.</u></p>	<p>2% of intertrack handle. <u>550.0951(3)(c)1.</u></p> <p>2.4% of intertrack simulcast handle. <u>550.0951(3)(c)1. and 550.09515(5)</u></p> <p>0.5% of intertrack and intertrack simulcast handle, if the guest is located outside market area of host and within market area of thoroughbred track conducting a live meet. <u>550.0951(3)(c)1.</u></p>
OUTS (ESCHEATS)					
Live / On-track Handle	Paid to the state of Florida. <u>550.1645(2)</u>	Paid to the state of Florida. <u>550.1645(2)</u>	Retained by permitholder. <u>550.2633(3)</u>	Paid to Florida Standardbred Breeders' and Owners' Association (FSBOA). <u>550.26165(1) and 550.2633(2)(a)</u>	<p>Paid to Florida Quarter Horse Breeders' and Owners Association (FQHBOA). <u>550.26165(1) and 550.2633(2)(b)</u></p> <p>Escheats from Arabian races are paid to Florida Arabian Horse Racing Promotion Account. <u>550.2633(2)(c)</u></p>

This matrix represents a summary of 2010 Statutes. Please refer to the cite noted by statutory topic for specific language governing pari-mutuel wagering.

STATUTE TOPIC	GREYHOUND	JAI ALAI	THOROUGHBRED	HARNESS	QUARTER HORSE
TAX CREDITS & EXEMPTIONS					
(excluding charity performances, unless otherwise noted)	<p>Tax exemption of \$360,000 per state fiscal year, or \$500,000 for three permitholders that held a full live schedule in 1995, and closest to another state authorizing greyhound racing. 550.09514(1)</p> <p>Tax credit each state fiscal year equal to daily license fee on live races in previous state fiscal year. 550.0951(1)(a)</p> <p>Allows each permitholder that cannot utilize the full amount of the tax exemption or daily license fee tax credit to transfer the unused portion to a greyhound permitholder acting as a host track for intertrack wagering. 550.0951(1)(b)</p> <p>Tax credit each state fiscal year in an amount equal to the amount remitted in escheated tickets in prior state fiscal year. 550.1647</p>	<p>A permitholder that has incurred tax on handle and admissions that exceeds its operating earnings is entitled to credit the excess amount of taxes against its next ensuing meets. 550.09511(1)(b)</p> <p>Tax credit each state fiscal year equal to 25% of amount remitted in escheated tickets in prior state fiscal year. Funds equal to the tax credit shall be paid by the permitholder to the National Association of Jai Alai Frontons. 550.1646</p> <p>\$30,000 per performance exemption if live handle during the preceding state fiscal year was less than \$15 million. <u>This exemption applies to charity performances.</u> 550.09511(2)(a)1.</p> <p>A permitholder conducting fewer than 100 performances in any calendar year shall pay to the state the same aggregate amount of daily license fees on live games, admissions tax, and tax on live handle as that paid during the most recent prior calendar year in which at least 100 live performances were conducted. 550.09511(4)</p>	<p>Permitholders are allowed a credit of up to 1% of the paid taxes for the previous taxable year. The credit, if taken, is applied against taxes on live handle due for a taxable year under this section, and is paid directly to the Jockeys' Guild by the permitholders. 550.09515(6)</p>		
CHARITY PERFORMANCES					
	<p>Maximum of five days. 550.0351(1)</p> <p>Permitholders are allowed to conduct one additional day to be designated as "Greyhound Adopt-A-Pet Day." Proceeds are paid to "bona fide organizations" that promote the adoption of greyhounds. 550.1648(2)</p> <p>Permitholders shall pay from any source, including charity performances, not less than 10% of tax credit from escheated tickets to a bona fide greyhound adoption program. 550.1647</p>	<p>Maximum of five days. 550.0351(1)</p> <p>Permitholders are allowed to conduct two additional performances known as "Retired Jai Alai Players' Charity Day" for a fund to benefit retired jai alai players. 550.0351(8)</p>	<p>Maximum of five days. 550.0351(1)</p> <p>One additional scholarship day to tracks located in Hillsborough County for the benefit of Pasco-Hernando Community College. 550.0351(6)(a) and 550.0351(6)(b)</p>	<p>Maximum of five days. 550.0351(1)</p>	<p>Maximum of five days. 550.0351(1)</p>

This matrix represents a summary of 2010 Statutes. Please refer to the cite noted by statutory topic for specific language governing pari-mutuel wagering.

STATUTE TOPIC	STATUTE REFERENCE	SUMMARY
FEES		
Slot License Fee	551.106(1)(a), F.S.	Annual fee for each slot machine facility is \$2.5 million paid with the initial license application and annual thereafter on the anniversary date of the issuance of the initial license.
Compulsive or Addictive Gambling Prevention Program Fee	551.118(3), F.S.	Annual fee for each slot machine facility is \$250,000 paid at the same time the annual license fee is due, and annual thereafter.
TAXES		
Tax on Slot Revenue	551.106(2)(a) and 551.006(3), F.S.	35% of slot machine revenues, which is the total of all cash and property, received by the slot machine licensee from the operation of slot machines less the amount of cash, cash equivalents, credits, and prizes paid to winners of slot machine gaming shall be remitted by 3 p.m. Wednesday for the preceeding week ending Sunday.
FINES		
Failure to Pay Slot Tax Fine	551.106(4), F.S.	Up to \$10,000 for each day tax payment is not remitted timely.
Civil Fine	551.107(11), F.S.	The division may impose a civil fine of up to \$5,000 for each violation of this chapter or the rules of the division.
False Statement Fine	551.109(1), F.S.	Up to a \$10,000 fine or civil penalty for any person who knowingly makes or causes to be made, or aids, assists, or procures another to make a false statement in any report, disclosure, application, or any document required under Chapter 551, or any rule adopted under Chapter 551.
Unauthorized Possession of Slot Machines Fine	551.109(2), F.S.	Up to a \$10,000 administrative fine or civil penalty for any person who possesses a slot machine without the license required by Chapter 551, or who possesses a slot machine at any location other than at the slot machines licensee's facility.
PENALTIES		
Slot Machine Licensee Civil Penalties	551.117, F.S.	Up to a \$100,000 civil penalty for each count or separate offense against the slot machine licensee for violation of Chapter 551, or any rule adopted by the division.

This matrix represents a summary of 2010 Statutes. Please refer to the cite noted by statutory topic for specific language governing slot operations.